

**PE anti-human MUC-17**

**Catalog # / Size:** 2576515 / 25 tests  
2576520 / 100 tests

**Clone:** MQ155

**Isotype:** Mouse IgG1, κ

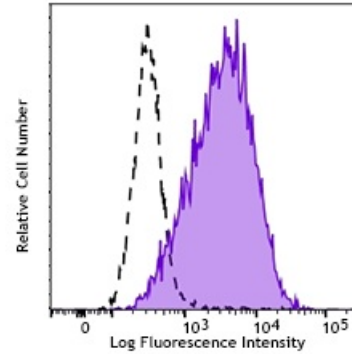
**Immunogen:** Purified Recombinant Muc17 protein, Freund's Complete Adjuvant

**Reactivity:** Human

**Preparation:** The antibody was purified by affinity chromatography and conjugated with PE under optimal conditions. The solution is free of unconjugated PE and unconjugated antibody.

**Formulation:** Phosphate-buffered solution, pH 7.2, containing 0.09% sodium azide and 0.2% (w/v) BSA (origin USA).

**Concentration:** Lot-specific



Human pancreatic cancer cell line (AsPC-1) stained with PE MUC-17 (Clone MQ155, filled histogram) or PE mouse IgG1, κ isotype control (open histogram).

**Applications:**

**Applications:** Flow Cytometry

**Recommended Usage:** Each lot of this antibody is quality control tested by immunofluorescent staining with flow cytometric analysis. For flow cytometric staining, the suggested use of this reagent is 5 μl per million cells in 100 μl staining volume or 5 μl per 100 μl of whole blood.

**Description:** It is a 451 KD glycosylated member of the mucin family with 2 EGF like domains on the C-terminus and serine/tyrosine phosphorylation sites on the cytoplasmic domain. It is expressed by epithelial cells and plays a role in cytoprotection, signal transduction. Expression of this molecule can also render tumor cells to become less adhesive. It interacts with PKDZ1 and increased expression of this molecule has been reported in colon cancer.

- Antigen References:**
1. Malmberg EK, *et al.* 2008. *Biochem J.* 410:283.
  2. Gum JR Jr, *et al.* 2002. *Biochem Biophys Res Commun.* 291:466.
  3. Hirono S, *et al.* 2010. *Cancer Sci.* 101:259.