

## FITC anti-human CD15 (SSEA-1)

**Catalog # /** 2573530 / 100 tests

**Size:** 2573525 / 25 tests

**Clone:** MMA

**Isotype:** Mouse IgM,  $\kappa$

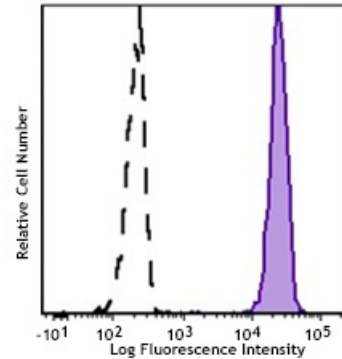
**Immunogen:** U-937 human cell line

**Reactivity:** Human

**Preparation:** The antibody was purified by affinity chromatography and conjugated with FITC under optimal conditions. The solution is free of unconjugated FITC and unconjugated antibody.

**Formulation:** Phosphate-buffered solution, pH 7.2, containing 0.09% sodium azide and 0.2% (w/v) BSA (origin USA).

**Concentration:** Lot-specific



Human peripheral blood granulocytes were stained with FITC CD15 (SSEA-1, clone MMA) (filled histogram) or FITC Mouse IgM,  $\kappa$  isotype control (open histogram).

## Applications:

**Applications:** Flow Cytometry

**Recommended Usage:** Each lot of this antibody is quality control tested by immunofluorescent staining with flow cytometric analysis. For flow cytometric staining, the suggested use of this reagent is 5  $\mu$ l per million cells or 5  $\mu$ l per 100  $\mu$ l of whole blood. It is recommended that the reagent be titrated for optimal performance for each application.

**Application Notes:** In-house testing suggests that clone MMA does not block W6D3 also raised against human CD15 (SSEA-1)

**Application References:** 1. Stocks SC, *et al.* 1990. *Biochem. J.* 268:275.

**Description:** CD15 is 3-fucosyl-N-acetyllactosamine (3-FAL), also known as Lewis X, 3-FAL, X-hapten, and SSEA-1. CD15 is expressed on granulocytes and monocytes. It has also been shown to be expressed on Langerhans cells and some malignant cells. CD15 has been implicated in adhesion, as well as chemotaxis, phagocytosis, and bactericidal activity.

**Antigen References:** 1. Stocks SC, *et al.* 1990. *Biochem. J.* 268:275.