

Purified anti-human CD15 (SSEA-1)

Catalog # / Size: 2573510 / 100 µg

Clone: MMA

Isotype: Mouse IgM, κ

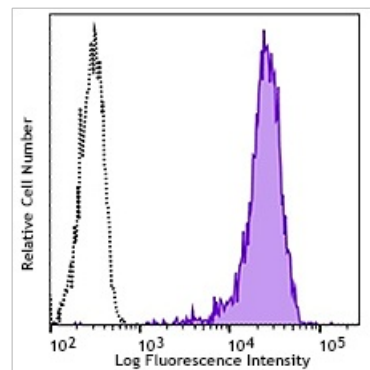
Immunogen: U-937 human cell line

Reactivity: Human

Preparation: The antibody was purified by affinity chromatography.

Formulation: Phosphate-buffered solution, pH 7.2, containing 0.09% sodium azide.

Concentration: 0.5 mg/ml



Human peripheral blood granulocytes were stained with purified CD15 (SSEA-1, clone MMA) (filled histogram) or purified Mouse IgM, κ isotype control (open histogram), followed by anti-mouse IgM FITC.

Applications:

Applications: Flow Cytometry, Immunohistochemistry

Recommended Usage: Each lot of this antibody is quality control tested by immunofluorescent staining with flow cytometric analysis. For flow cytometric staining, the suggested use of this reagent is ≤0.125 µg per million cells in 100 µl volume. It is recommended that the reagent be titrated for optimal performance for each application.

Application Notes: In-house testing suggests that clone MMA does not block W6D3 also raised against human CD15 (SSEA-1)

Application References: 1. Stocks SC, *et al.* 1990. *Biochem. J.* 268:275.

Description: CD15 is 3-fucosyl-N-acetylglucosamine (3-FAL), also known as Lewis X, 3-FAL, X-hapten, and SSEA-1. CD15 is expressed on granulocytes and monocytes. It has also been shown to be expressed on Langerhans cells and some malignant cells. CD15 has been implicated in adhesion, as well as chemotaxis, phagocytosis, and bactericidal activity.

Antigen References: 1. Stocks SC, *et al.* 1990. *Biochem. J.* 268:275.