

APC anti-human CD224

Catalog # / Size: 2571525 / 25 tests
2571530 / 100 tests

Clone: KF29

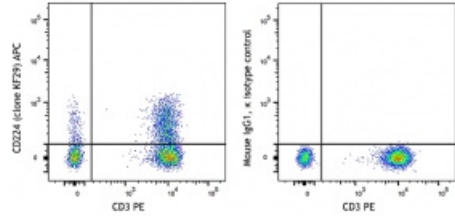
Isotype: Mouse IgG1, κ

Reactivity: Human

Preparation: The antibody was purified by affinity chromatography and conjugated with APC under optimal conditions. The solution is free of unconjugated APC and unconjugated antibody.

Formulation: Phosphate-buffered solution, pH 7.2, containing 0.09% sodium azide and 0.2% (w/v) BSA (origin USA).

Concentration: Lot-specific



Human peripheral blood lymphocytes were stained with CD3 PE and CD224 (clone KF29) APC (left) or mouse IgG1, κ isotype control (right).

Applications:

Applications: Flow Cytometry

Recommended Usage: Each lot of this antibody is quality control tested by immunofluorescent staining with flow cytometric analysis. For flow cytometric staining, the suggested use of this reagent is 5 μ l per million cells in 100 μ l staining volume or 5 μ l per 100 μ l of whole blood.

Description: CD224, also known as γ -Glutamyl transferase 1 (GGT1), is a type I gamma-glutamyltransferase, and a member of the threonine peptidase family. CD224 consists of a 380 amino acid heavy chain and a 189 amino acid light chain, which are translated from a single mRNA. It protects cells from oxidative stress by participating in γ -glutamyl cycle. CD224 is expressed on subset of T cells, B cells, stem cell precursor, endothelial cells and epithelial cells. It expresses on kidney, duodenum and small intestine.

- Antigen References:**
1. Mizushima T, *et al.* 2016. *BMC. Cancer.* 16:411.
 2. Wang Q, *et al.* 2017. *Oncotarget.* 8(22): 36171-36184.
 3. Jiang Y, *et al.* 2016. *Mol. Med.* 13(5):3813-20.
 4. Karp DR, *et al.* 1999. *Int. Immunol.* 11(11):1791-800.