

Brilliant Violet 421™ anti-human Ig light chain κ

Catalog # / Size: 2563530 / 100 tests
2563525 / 25 tests

Clone: TB28-2

Isotype: Mouse IgG1, κ

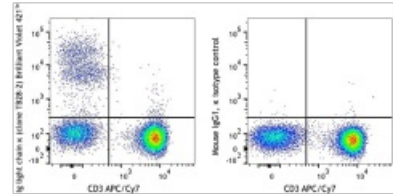
Immunogen: Human IgG κ myeloma protein CFA.

Reactivity: Human

Preparation: The antibody was purified by affinity chromatography and conjugated with Brilliant Violet 421™ under optimal conditions. The solution is free of unconjugated Brilliant Violet 421™ and unconjugated antibody.

Formulation: Phosphate-buffered solution, pH 7.2, containing 0.09% sodium azide and BSA (origin USA).

Concentration: Lot-specific



Overnight cultured human peripheral blood lymphocytes were stained with CD3 APC/Cy7 and Ig light chain κ (clone TB28-2) Brilliant Violet 421™ (left) or mouse IgG1, κ isotype control Brilliant Violet 421™ (right).

Applications:

Applications: Flow Cytometry

Recommended Usage: Each lot of this antibody is quality control tested by immunofluorescent staining with flow cytometric analysis. For flow cytometric staining, the suggested use of this reagent is 5 µl per million cells or 5 µl per 100 µl of whole blood. It is recommended that the reagent be titrated for optimal performance for each application.

Brilliant Violet 421™ excites at 405 nm and emits at 421 nm. The standard bandpass filter 450/50 nm is recommended for detection. Brilliant Violet 421™ is a trademark of Sirigen Group Ltd.

This product is subject to proprietary rights of Sirigen Inc. and is made and sold under license from Sirigen Inc. The purchase of this product conveys to the buyer a non-transferable right to use the purchased product for research purposes only. This product may not be resold or incorporated in any manner into another product for resale. Any use for therapeutics or diagnostics is strictly prohibited. This product is covered by U.S. Patent(s), pending patent applications and foreign equivalents.

Application Notes: The TB28-2 target antigen is also present in serum. Cell surface staining may be optimized by removing serum from the sample prior to staining.

Additional reported applications (for relevant formats) include immunohistochemical staining on frozen tissue sections¹.

Application**References:**

1. Katzmann JA, et al. 2002. *Clin Chem.* 48: 1437
 2. Weinberg DS, et al. 1984. *Blood.* 63:1080.
 3. Johnson A, et al. 1985. *Br. J. Cancer.* 52: 159.
 4. Oka S, et al. 2012. *J. Clin. Exp. Hematop.*
-

Description:

The TB28-2 antibody reacts with both soluble and membrane human immunoglobulin light chain kappa (κ). It does not react with human immunoglobulin light chain lambda (λ) or heavy chain.

Antigen**References:**

1. Katzmann JA, et al. 2002. *Clin Chem.* 48: 1437
2. Weinberg DS, et al. 1984. *Blood.* 63:1080.
3. Johnson A, et al. 1985. *Br. J. Cancer.* 52: 159.
4. Oka S, et al. 2012. *J. Clin. Exp. Hematop.* 52: 127.