

APC anti-human GPR15

Catalog # / Size: 2465025 / 25 tests
2465030 / 100 tests

Clone: SA302A10

Isotype: Mouse IgG2a, κ

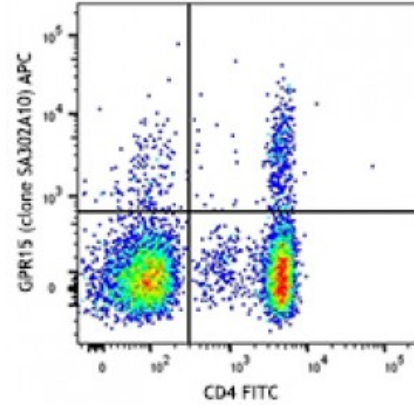
Immunogen: Human GPR15-transfected cells.

Reactivity: Human

Preparation: The antibody was purified by affinity chromatography and conjugated with APC under optimal conditions. The solution is free of unconjugated APC and unconjugated antibody.

Formulation: Phosphate-buffered solution, pH 7.2, containing 0.09% sodium azide and 0.2% (w/v) BSA (origin USA).

Concentration: Lot-specific

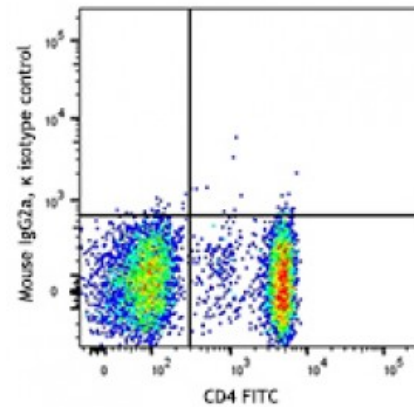


Human peripheral blood lymphocytes were stained with CD4 FITC and GPR15 (clone SA302A10) APC (top) or mouse IgG2a, κ isotype control (bottom).

Applications:

Applications: Flow Cytometry

Recommended Usage: Each lot of this antibody is quality control tested by immunofluorescent staining with flow cytometric analysis. For flow cytometric staining, the suggested use of this reagent is 5 microL per million cells or 5 microL per 100 microL of whole blood. It is recommended that the reagent be titrated for optimal performance for each application.



Description: GPR15, also known as BOB, is a G-protein coupled receptor with 7 transmembrane regions, that is present on the cell surface as an homotrimer. GPR15 is homologous to chemokine receptors but its natural ligand is unknown. It acts as receptor for human immunodeficiency virus type 1 and 2. GPR15 is expressed by effector T cells and subsets of memory T cells, and is involved in the recruitment of proinflammatory CD4⁺ T cells responsible of the pathogenesis in colitis. It is upregulated on monocytes and neutrophils in the synovia of patients with RA.

- Antigen References:**
1. Nguyen LP, *et al.* 2015. *Nat. Immunol.* 16:207.
 2. Kiene M, *et al.* 2014. *PLoS. One.* 9:e88195.
 3. Cartwright A, *et al.* 2014. *Cytokine.* 67:53.
 4. Kim SV, *et al.* 2013. *Scie*