

PE anti-human MS4A4A

Catalog # / Size: 2462515 / 25 tests
2462520 / 100 tests

Clone: 5C12/MS4A4A

Isotype: Mouse IgG1, λ

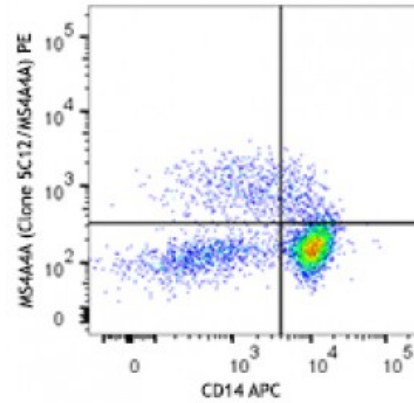
Immunogen: Human MS4A4A-GFP Transfected 300.19 Mouse Pre-B Cell Line

Reactivity: Human

Preparation: The antibody was purified by affinity chromatography and conjugated with PE under optimal conditions. The solution is free of unconjugated PE and unconjugated antibody.

Formulation: Phosphate-buffered solution, pH 7.2, containing 0.09% sodium azide and 0.2% (w/v) BSA (origin USA).

Concentration: Lot-specific

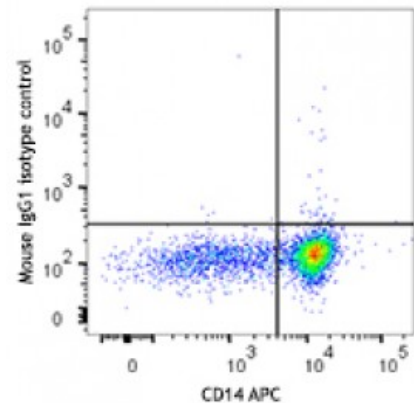


Human peripheral blood leukocytes were stained with PE anti-human MS4A4A (clone 5C12/MS4A4A) (top) or PE mouse IgG1 isotype control (bottom). Cells were then stained with CD14 APC. Data shown was gated on monocyte population.

Applications:

Applications: Flow Cytometry

Recommended Usage: Each lot of this antibody is quality control tested by immunofluorescent staining with flow cytometric analysis. For flow cytometric staining, the suggested use of this reagent is 5 microL per million cells or 5 microL per 100 microL of whole blood. It is recommended that the reagent be titrated for optimal performance for each application.



Description: MS4A4A is the "member 4A" of a newly recognized "membrane-spanning 4A (MS4A)" gene family. Each protein of this family has four conservative transmembrane domains, and hence is predicted to traverse the plasma membrane four times. MS4A4A is also known as MS4A4, MS4A7, 4SPAN1, CD20L1, or HDCME31P. MS4A4A may function in signal transduction, although the mechanisms of which are largely unknown.

Antigen References:

1. Ishibashi K, *et al.* 2001. *Gene.* 264:87.
2. Cruse G, *et al.* 2015. *Mol. Biol. Cell.* 26:1711.