

**APC anti-human Granzyme K**

**Catalog # / Size:** 2452550 / 100 tests  
2452545 / 25 tests

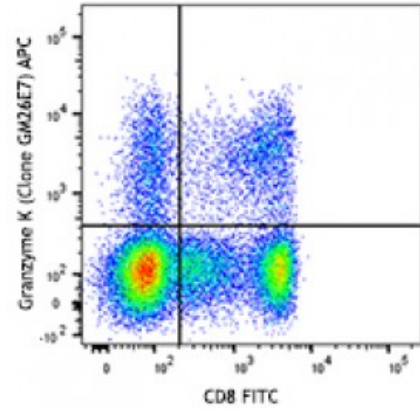
**Clone:** GM26E7

**Isotype:** Mouse IgG1, κ

**Reactivity:** Human

**Preparation:** Phosphate-buffered solution, pH 7.2, containing 0.09% sodium azide and 0.2% (w/v) BSA (origin USA).

**Concentration:** Lot-specific

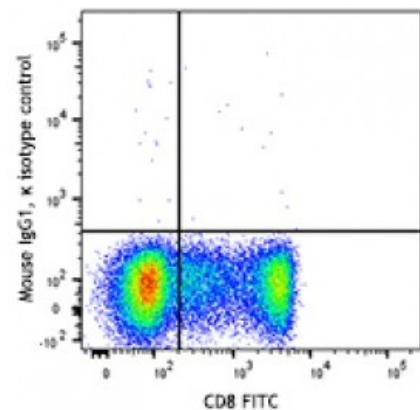


Human peripheral blood lymphocytes were stained with CD8 FITC, fixed, permeabilized, and intracellularly stained with anti-human Granzyme K antibody (clone GM26E7) APC (top) or mouse IgG1, κ APC isotype control.

**Applications:**

**Applications:** Flow Cytometry

**Recommended Usage:** Each lot of this antibody is quality control tested by intracellular immunofluorescent staining with flow cytometric analysis. For flow cytometric staining, the suggested use of this reagent is 5 microL per million cells or 5 microL per 100 microL of whole blood. It is recommended that the reagent be titrated for optimal performance for each application.



**Description:** Granzyme K is a 29 kD serine protease found in cytoplasmic granules of cytotoxic lymphocytes and NK cells. Granzyme K is thought to induce cell death and lysis in response to non-self antigens on the cell surface by cleaving nucleosome assembly protein SET. Granzyme K is upregulated in several diseases associated with inflammation including arthritis, atherosclerosis, and asthma.

- Antigen References:**
1. Vrazo AC, *et al.* 2015. *Blood* 126.
  2. Cooper DM, *et al.* 2011. *PLoS. One* 6.
  3. Wensink AC, *et al.* 2015. *J. Immunol.* 194:491.
  4. Zhao T, *et al.* 2007. *Cell Death Differ.* <