

PE/Dazzle™ 594 anti-human CD223 (LAG-3)

Catalog # / Size: 2446660 / 100 tests
2446655 / 25 tests

Clone: 11C3C65

Isotype: Mouse IgG1, κ

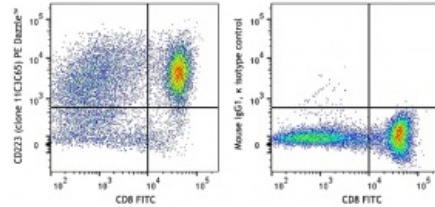
Immunogen: Human LAG-3 transfected cells.

Reactivity: Human

Preparation: The antibody was purified by affinity chromatography and conjugated with PE/Dazzle™ 594 under optimal conditions. The solution is free of unconjugated PE/Dazzle™ 594 and unconjugated antibody.

Formulation: Phosphate-buffered solution, pH 7.2, containing 0.09% sodium azide and 0.2% (w/v) BSA (origin USA).

Concentration: Lot-specific



CD3/CD28/IL-2 stimulated (three days) peripheral blood mononuclear cells were stained with CD8 FITC and CD223 (LAG-3, clone 11C3C65) PE Dazzle™ 594 (left) or mouse IgG1, κ PE Dazzle™ 594 isotype control (right).

Applications:

Applications: Flow Cytometry

Recommended Usage: Each lot of this antibody is quality control tested by immunofluorescent staining with flow cytometric analysis. For flow cytometric staining, the suggested use of this reagent is 5 µl per million cells or 5 µl per 100 µl of whole blood. It is recommended that the reagent be titrated for optimal performance for each application.

* PE/Dazzle™ 594 has a maximum excitation of 566 nm and a maximum emission of 610 nm.

Application Notes: The staining of clone 11C3C65 cannot be blocked by clone 7H2C65, which is another anti-human CD223 (LAG-3) antibody.

Application References:

1. Castelli C, *et al.* 2014. *Oncoimmunology*. 3(11):e967146.
2. Poirier N, *et al.* 2011. *Clin. Exp. Immunol.* 164:265.
3. Juno JA, *et al.* 2015. *Retrovirology*. 12:17.
4. Casati C, *et*

Description: CD223, also known as LAG-3, is a 70 kD type I transmembrane glycoprotein that is involved in T-cell signaling. Similar to CD4, CD223 binds MHC class II, but with a higher affinity. CD223 negatively regulates T-cell activation. It is expressed by activated T-cells and natural killer cells (NKs), as well as regulatory T-cells. It is transiently expressed on the surface of activated T-cells in acute conditions but high expression is maintained under tolerizing conditions. CD223 deficiency results in reduced tumor growth. CD223 and PD-1 can act in synergy and reverse exhausted phenotypes, improve tumor rejection, and control viral load.

Antigen References:

1. Castelli C, *et al.* 2014. *Oncoimmunology*. 3(11):e967146.
2. Poirier N, *et al.* 2011. *Clin. Exp. Immunol.* 164:265.
3. Juno JA, *et al.* 2015. *Retrovirology*. 12:17.

4. Casati C, *et*