

PE/Cyanine7 anti-human GPR183 (EBI2)

Catalog # / 2444575 / 25 tests
Size: 2444580 / 100 tests

Clone: SA313E4

Isotype: Mouse IgG2a, κ

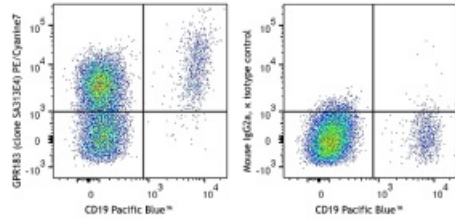
Immunogen: Human GPR183-transfected cells

Reactivity: Human

Preparation: The antibody was purified by affinity chromatography and conjugated with PE/Cyanine7 under optimal conditions.

Formulation: Phosphate-buffered solution, pH 7.2, containing 0.09% sodium azide and 0.2% (w/v) BSA (origin USA)

Concentration: Lot-specific



Human peripheral blood lymphocytes were stained with CD19 Pacific Blue™ and GPR183 (EBI2) (clone SA313E4) PE/Cyanine7 (left) or mouse IgG2a, κ isotype control PE/Cyanine7 (right).

Applications:

Applications: Flow Cytometry

Recommended Usage: Each lot of this antibody is quality control tested by immunofluorescent staining with flow cytometric analysis. For flow cytometric staining, the suggested use of this reagent is 5 μL per million cells in 100 μL staining volume or 5 μL per 100 μL of whole blood. It is recommended that the reagent be titrated for optimal performance for each application.

Description: GPR183, also known as EBI2, is a member of the rhodopsin-like subfamily of 7TM receptors, which forms homodimers and heterodimers when it associates with CXCR5. GPR183 is expressed by Naive B cells, subset of T cells, monocytes and macrophages, and is highly upregulated by Epstein-Barr virus infection. GPR183 regulates the B cell trafficking within lymphoid follicles in response to 7α, 25-dihydroxycholesterol.

- Antigen References:**
1. Preuss I, et al. 2014. *Biochem. Biophys. Res. Commun.* 446:663.
 2. Barroso R, et al. 2012. *FASEB J.* 26:4841.
 3. Hannedouche S, et al. 2011. *Nature.* 475:524.
 4. Benned-Jensen T, et al. 2011. *J. Biol. Chem.* 286:29292.