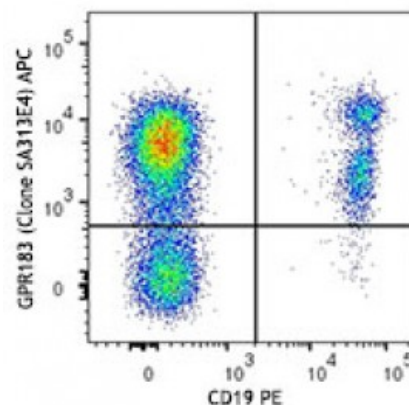


APC anti-human GPR183 (EBI2)

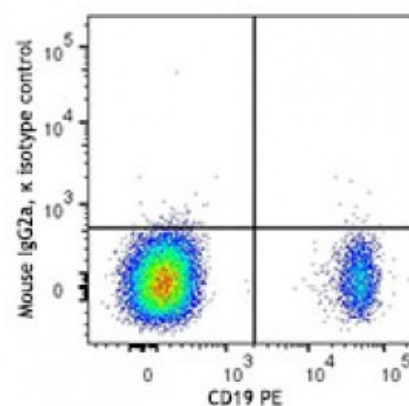
Catalog # / Size:	2444535 / 25 tests 2444540 / 100 tests
Clone:	SA313E4
Isotype:	Mouse IgG2a, κ
Immunogen:	Human GPR183-transfected cells.
Reactivity:	Human
Preparation:	The antibody was purified by affinity chromatography and conjugated with APC under optimal conditions. The solution is free of unconjugated APC and unconjugated antibody.
Formulation:	Phosphate-buffered solution, pH 7.2, containing 0.09% sodium azide and 0.2% (w/v) BSA (origin USA).
Concentration:	Lot-specific



Human peripheral blood lymphocytes were stained with CD19 PE and GPR183 (clone SA313E4) APC (top) or mouse IgG2a, κ isotype control (bottom).

Applications:

Applications:	Flow Cytometry
Recommended Usage:	Each lot of this antibody is quality control tested by immunofluorescent staining with flow cytometric analysis. For flow cytometric staining, the suggested use of this reagent is 5 microL per million cells or 5 microL per 100 microL of whole blood. It is recommended that the reagent be titrated for optimal performance for each application.



Description: GPR183, also known as EBI2, is a member of the rhodopsin-like subfamily of 7TM receptors, which forms homodimers and heterodimers when it associates with CXCR5. GPR183 is expressed by Naive B cells, subset of T cells, monocytes and macrophages, and is highly upregulated by Epstein-Barr virus infection. GPR183 regulates the B cell trafficking within lymphoid follicles in response to 7α , 25-dihydroxycholesterol.

Antigen	1. Preuss I, <i>et al.</i> 2014. <i>Biochem. Biophys. Res. Commun.</i> 446:663.
References:	2. Barroso R, <i>et al.</i> 2012. <i>FASEB J.</i> 26:4841.
	3. Hannedouche S, <i>et al.</i> 2011. <i>Nature.</i> 475:524.
	4. Benned-Jensen T,