

**FITC anti-human GPR183 (EBI2)**

**Catalog # / Size:** 2444530 / 100 tests  
2444525 / 25 tests

**Clone:** SA313E4

**Isotype:** Mouse IgG2a, κ

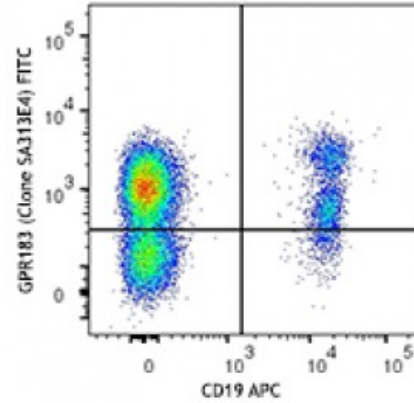
**Immunogen:** Human GPR183-transfected cells.

**Reactivity:** Human

**Preparation:** The antibody was purified by affinity chromatography and conjugated with FITC under optimal conditions. The solution is free of unconjugated FITC and unconjugated antibody.

**Formulation:** Phosphate-buffered solution, pH 7.2, containing 0.09% sodium azide and 0.2% (w/v) BSA (origin USA).

**Concentration:** Lot-specific

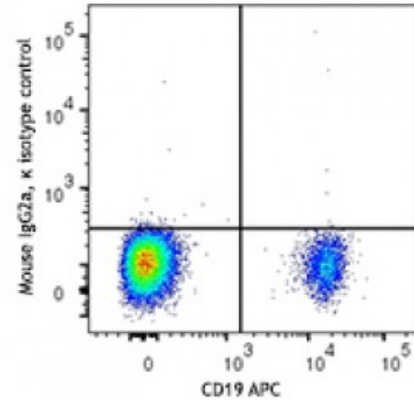


Human peripheral blood lymphocytes were stained with CD19 APC and GPR183 (clone SA313E4) FITC (top) or mouse IgG2a, κ FITC isotype control (bottom).

**Applications:**

**Applications:** Flow Cytometry

**Recommended Usage:** Each lot of this antibody is quality control tested by immunofluorescent staining with flow cytometric analysis. For flow cytometric staining, the suggested use of this reagent is 5 microL per million cells or 5 microL per 100 microL of whole blood. It is recommended that the reagent be titrated for optimal performance for each application.



**Description:** GPR183, also known as EBI2, is a member of the rhodopsin-like subfamily of 7TM receptors, which forms homodimers and heterodimers when it associates with CXCR5. GPR183 is expressed by Naive B cells, subset of T cells, monocytes and macrophages, and is highly upregulated by Epstein-Barr virus infection. GPR183 regulates the B cell trafficking within lymphoid follicles in response to 7α, 25-dihydroxycholesterol.

- Antigen**
- References:**
1. Preuss I, *et al.* 2014. *Biochem. Biophys. Res. Commun.* 446:663.
  2. Barroso R, *et al.* 2012. *FASEB J.* 26:4841.
  3. Hannedouche S, *et al.* 2011. *Nature.* 475:524.
  4. Benned-Jensen T,