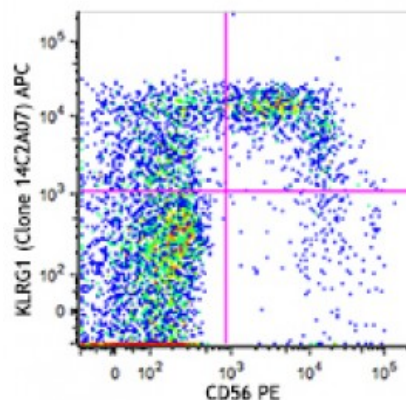


APC anti-human KLRG1 (MAFA)

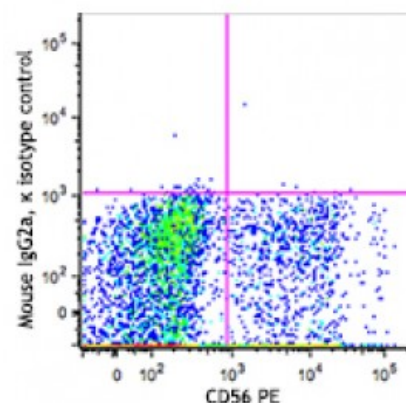
Catalog # / Size:	2443030 / 100 tests 2443025 / 25 tests
Clone:	14C2A07
Isotype:	Mouse IgG2a, κ
Immunogen:	Human KLRG1-transfected cells.
Reactivity:	Human
Preparation:	The antibody was purified by affinity chromatography and conjugated with APC under optimal conditions. The solution is free of unconjugated APC and unconjugated antibody.
Formulation:	Phosphate-buffered solution, pH 7.2, containing 0.09% sodium azide and 0.2% (w/v) BSA (origin USA).
Concentration:	Lot-specific



Human peripheral blood lymphocytes were stained with CD56 PE and KLRG1 (clone 14C2A07) APC (top) or mouse IgG2a, κ APC isotype control (bottom).

Applications:

Applications:	Flow Cytometry
Recommended Usage:	Each lot of this antibody is quality control tested by immunofluorescent staining with flow cytometric analysis. For flow cytometric staining, the suggested use of this reagent is 5 microL per million cells or 5 microL per 100 microL of whole blood. It is recommended that the reagent be titrated for optimal performance for each application.



Description: Killer cell lectin-like receptor subfamily G member (KLRG1) is a 30 kD, type II membrane glycoprotein with one C-type lectin domain and one immunoreceptor tyrosine-based inhibitory motif (ITIM). KLRG1 is expressed by subsets of natural killer cells (NKs) and effector and memory T cells. It inhibits cell activation and proliferation and is also a marker of T cell senescence. The binding of KLRG1 to E-, N-, or R- cadherins blocks phosphorylation of AKT and increases the expression of cell cycle inhibitors.

Antigen References: 1. Shi L, *et al.* 2014. *J. Immunol.* 192:649.