

**Brilliant Violet 421™ anti-human KLRG1 (MAFA)**

**Catalog # / Size:** 2443020 / 100 tests  
2443015 / 25 tests

**Clone:** 14C2A07

**Isotype:** Mouse IgG2a, κ

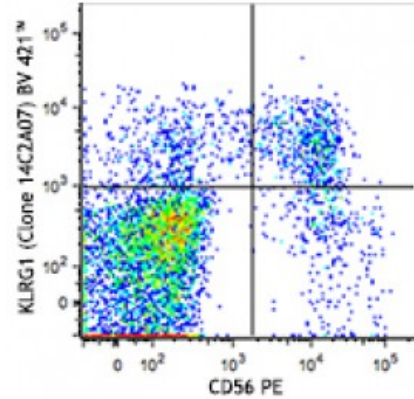
**Immunogen:** Human KLRG1-transfected cells.

**Reactivity:** Human

**Preparation:** The antibody was purified by affinity chromatography and conjugated with Brilliant Violet 421™ under optimal conditions. The solution is free of unconjugated Brilliant Violet 421™ and unconjugated antibody.

**Formulation:** Phosphate-buffered solution, pH 7.2, containing 0.09% sodium azide and BSA (origin USA).

**Concentration:** Lot-specific

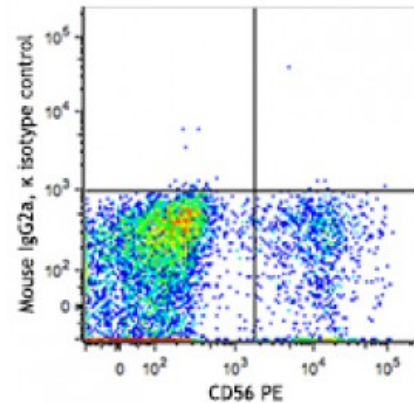


Human peripheral blood lymphocytes were stained with CD56 PE and KLRG1 (clone 14C2A07) Brilliant Violet 421™ (top) or mouse IgG2a, κ Brilliant Violet 421™ isotype control (bottom).

**Applications:**

**Applications:** Flow Cytometry

**Recommended Usage:** Each lot of this antibody is quality control tested by immunofluorescent staining with flow cytometric analysis. For flow cytometric staining, the suggested use of this reagent is ≤5 microL per million cells or 5 microL per 100 microL of whole blood. It is recommended that the reagent be titrated for optimal performance for each application.



Brilliant Violet 421™ excites at 405 nm and emits at 421 nm. The standard bandpass filter 450/50 nm is recommended for detection. Brilliant Violet 421™ is a trademark of Sirigen Group Ltd.

This product is subject to proprietary rights of Sirigen Inc. and is made and sold under license from Sirigen Inc. The purchase of this product conveys to the buyer a non-transferable right to use the purchased product for research purposes only. This product may not be resold or incorporated in any manner into another product for resale. Any use for therapeutics or diagnostics is strictly prohibited. This product is covered by U.S. Patent(s), pending patent applications and foreign equivalents.

---

**Description:** Killer cell lectin-like receptor subfamily G member (KLRG1) is a 30 kD, type II membrane glycoprotein with one C-type lectin domain and one immunoreceptor tyrosine-based inhibitory motif (ITIM). KLRG1 is expressed by subsets of natural killer cells (NKs) and effector and memory T cells. It inhibits cell activation and proliferation and is also a marker of T cell senescence. The binding of KLRG1 to E-, N-, or R- cadherins blocks phosphorylation of AKT and increases the expression of cell cycle inhibitors.

**Antigen**  
**References:** 1. Shi L, *et al.* 2014. *J. Immunol.* 192:649.