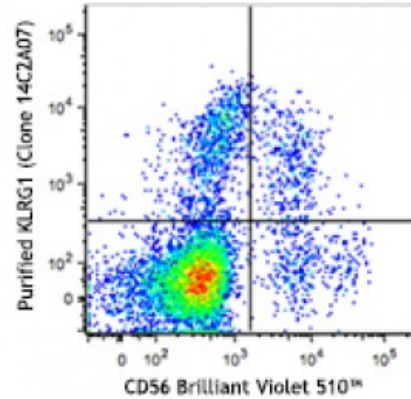


Purified anti-human KLRG1 (MAFA)

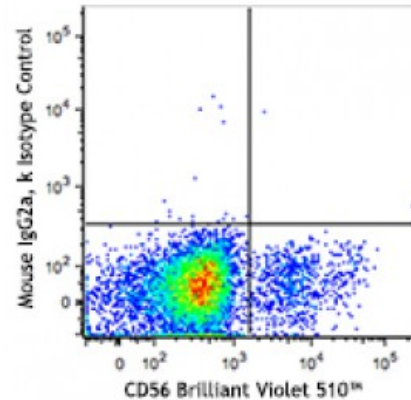
Catalog # / Size: 2443010 / 100 µg
Clone: 14C2A07
Isotype: Mouse IgG2a, κ
Immunogen: Human KLRG1-transfected cells.
Reactivity: Human
Preparation: The antibody was purified by affinity chromatography.
Formulation: Phosphate-buffered solution, pH 7.2, containing 0.09% sodium azide.
Concentration: Lot-specific



Human peripheral blood lymphocytes were stained with purified KLRG1 (clone 14C2A07, top) or purified mouse IgG2a, κ isotype control (bottom) followed by anti-mouse IgG PE. The cells were then stained with CD56 Brilliant Violet 510™.

Applications:

Applications: Flow Cytometry
Recommended Usage: Each lot of this antibody is quality control tested by immunofluorescent staining with flow cytometric analysis. For flow cytometric staining, the suggested use of this reagent is ≤1.0 microg per million cells in 100 microL volume. It is recommended that the reagent be titrated for optimal performance for each application.



Description: Killer cell lectin-like receptor subfamily G member (KLRG1) is a 30 kD, type II membrane glycoprotein with one C-type lectin domain and one immunoreceptor tyrosine-based inhibitory motif (ITIM). KLRG1 is expressed by subsets of natural killer cells (NKs) and effector and memory T cells. It inhibits cell activation and proliferation and is also a marker of T cell senescence. The binding of KLRG1 to E-, N-, or R- cadherins blocks phosphorylation of AKT and increases the expression of cell cycle inhibitors.

Antigen References: 1. Shi L, *et al.* 2014. *J. Immunol.* 192:649.