

KIRAVIA Blue 520™ anti-human KLRG1 (MAFA)

Catalog # / Size: 2438625 / 25 tests
2438630 / 100 tests

Clone: SA231A2

Isotype: Mouse IgG2a, κ

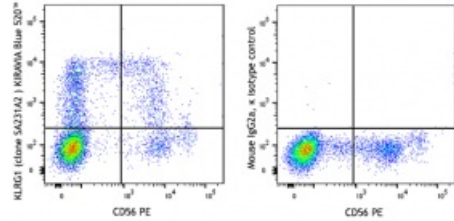
Immunogen: Human KLRG1-transfected cells

Reactivity: Human

Preparation: The antibody was purified by affinity chromatography and conjugated with KIRAVIA Blue 520™ under optimal conditions.

Formulation: Phosphate-buffered solution, pH 7.2, containing 0.09% sodium azide and 0.2% (w/v) BSA (origin USA).

Concentration: Lot-specific



Human peripheral blood lymphocytes were stained with CD56 PE and anti-human KLRG1 (MAFA) (clone SA231A2) KIRAVIA Blue 520™ (left) or mouse IgG2a, κ KIRAVIA Blue 520™ isotype control (right).

Applications:

Applications: Flow Cytometry

Recommended Usage: Each lot of this antibody is quality control tested by immunofluorescent staining with flow cytometric analysis. For flow cytometric staining, the suggested use of this reagent is 5 μL per million cells in 100 μL staining volume or 5 μL per 100 μL of whole blood. It is recommended that the reagent be titrated for optimal performance for each application.

* KIRAVIA Blue 520™ has an excitation maximum of 495 nm, and a maximum emission of 520 nm.

Description: Killer cell lectin-like receptor subfamily G member 1 (KLRG1) is a 30 kD, type II membrane glycoprotein with one C-type lectin domain and one immunoreceptor tyrosine-based inhibitory motif (ITIM). KLRG1 is expressed by subsets of NK, effector and memory T cells. KLRG1 inhibits cell activation and proliferation, and is a marker of T cell senescence. Binding of KLRG1 to E-, N-, or R- cadherins blocks phosphorylation of Akt and increases the expression of cell cycle inhibitors.

Antigen References: 1. Shi L, *et al.* 2014. *J. Immunol.* 192:649.