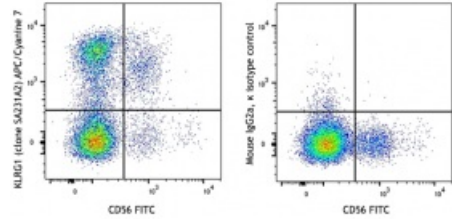


**APC/Cyanine7 anti-human KLRG1 (MAFA)**

**Catalog # /** 2438620 / 100 tests  
**Size:** 2438615 / 25 tests  
**Clone:** SA231A2  
**Isotype:** Mouse IgG2a, κ  
**Immunogen:** Human KLRG1-transfected cells  
**Reactivity:** Human  
**Preparation:** The antibody was purified by affinity chromatography and conjugated with APC/Cyanine7 under optimal conditions.  
**Formulation:** Phosphate-buffered solution, pH 7.2, containing 0.09% sodium azide and 0.2% (w/v) BSA (origin USA)  
**Workshop Number:** IV 103  
**Concentration:** Lot-specific



Human peripheral blood lymphocytes were stained with CD56 FITC and KLRG1 (MAFA) (clone SA231A2) APC/Cyanine7 (left) or mouse IgG2a, κ APC/Cyanine7 isotype control (right).

**Applications:**

**Applications:** Flow Cytometry

**Recommended Usage:** Each lot of this antibody is quality control tested by immunofluorescent staining with flow cytometric analysis. For flow cytometric staining, the suggested use of this reagent is 5 µL per million cells in 100 µL staining volume or 5 µL per 100 µL of whole blood. It is recommended that the reagent be titrated for optimal performance for each application.

**Application Notes:** Additional reported applications (for the relevant formats) include: immunohistochemical staining of paraformaldehyde fixed frozen sections.<sup>4</sup>

**Application References:**  
 1. Fridlender ZG, *et al.* 1999. *Hum. Immunol.* 11:1028.  
 2. Devitt A, *et al.* 1998. *Nature* 6675:505.

**Description:** Killer cell lectin-like receptor subfamily G member 1 (KLRG1) is a 30 kD, type II membrane glycoprotein with one C-type lectin domain and one immunoreceptor tyrosine-based inhibitory motif (ITIM). KLRG1 is expressed by subsets of NK, effector and memory T cells. KLRG1 inhibits cell activation and proliferation, and is a marker of T cell senescence. Binding of KLRG1 to E-, N-, or R- cadherins blocks phosphorylation of Akt and increases the expression of cell cycle inhibitors.

**Antigen References:**  
 1. Shi L, *et al.* 2014. *J. Immunol.* 192:649.