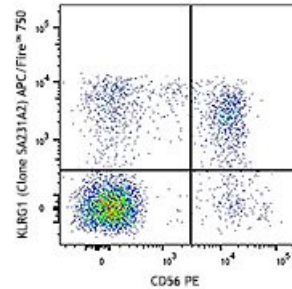


APC/Fire™ 750 anti-human KLRG1 (MAFA)

Catalog # / 2438590 / 100 tests
Size: 2438585 / 25 tests
Clone: SA231A2
Isotype: Mouse IgG2a, κ
Immunogen: Human KLRG1-transfected cells
Reactivity: Human
Preparation: The antibody was purified by affinity chromatography and conjugated with APC/Fire™ 750 under optimal conditions.
Formulation: Phosphate-buffered solution, pH 7.2, containing 0.09% sodium azide and 0.2% (w/v) BSA (origin USA).
Concentration: Lot-specific

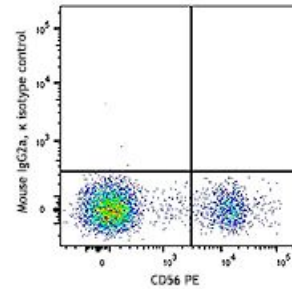


Human peripheral blood lymphocytes were stained with CD56 PE and KLRG1 (clone SA231A2) APC/Fire™ 750 (top) or mouse IgG2a, κ APC/Fire™ 750 isotype control (bottom).

Applications:

Applications: Flow Cytometry

Recommended Usage: Each lot of this antibody is quality control tested by immunofluorescent staining with flow cytometric analysis. For flow cytometric staining, the suggested use of this reagent is 5 µl per million cells in 100 µl staining volume or 5 µl per 100 µl of whole blood.
 * APC/Fire™ 750 has a maximum excitation of 650 nm and a maximum emission of 787 nm.



Application References: 1. Rogers AE, *et al.* 2012. *Oncogene* 31:4171.

Description: Killer cell lectin-like receptor subfamily G member 1 (KLRG1) is a 30 kD, type II membrane glycoprotein with one C-type lectin domain and one immunoreceptor tyrosine-based inhibitory motif (ITIM). KLRG1 is expressed by subsets of NK, effector and memory T cells. KLRG1 inhibits cell activation and proliferation, and is a marker of T cell senescence. Binding of KLRG1 to E-, N-, or R- cadherins blocks phosphorylation of Akt and increases the expression of cell cycle inhibitors.

Antigen References: 1. Shi L, *et al.* 2014. *J. Immunol.* 192:649.