

PE anti-human KLRG1 (MAFA)

Catalog # / Size: 2438555 / 25 tests
2438560 / 100 tests

Clone: SA231A2

Isotype: Mouse IgG2a, κ

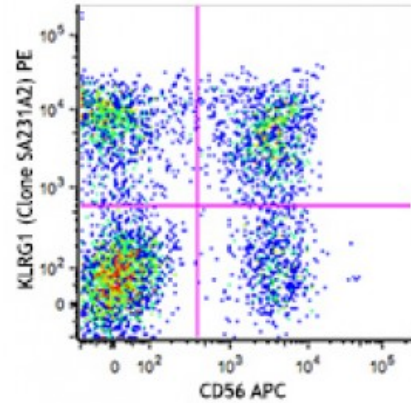
Immunogen: Human KLRG1-transfected cells

Reactivity: Human

Preparation: The antibody was purified by affinity chromatography and conjugated with PE under optimal conditions. The solution is free of unconjugated PE and unconjugated antibody.

Formulation: Phosphate-buffered solution, pH 7.2, containing 0.09% sodium azide and 0.2% (w/v) BSA (origin USA).

Concentration: Lot-specific

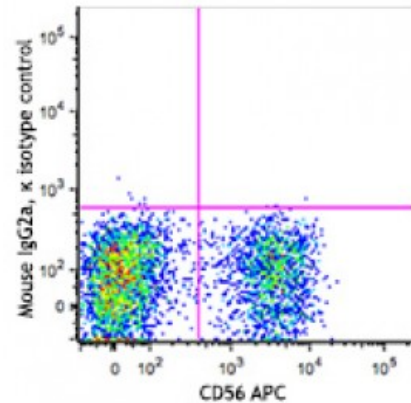


Human peripheral blood lymphocytes were stained with CD56 APC and KLRG1 (clone SA231A2) PE (top) or mouse IgG2a, κ PE isotype control (bottom).

Applications:

Applications: Flow Cytometry

Recommended Usage: Each lot of this antibody is quality control tested by immunofluorescent staining with flow cytometric analysis. For flow cytometric staining, the suggested use of this reagent is 5 microL per million cells or 5 microL per 100 microL of whole blood. It is recommended that the reagent be titrated for optimal performance for each application.



Description: Killer cell lectin-like receptor subfamily G member 1 (KLRG1) is a 30 kD, type II membrane glycoprotein with one C-type lectin domain and one immunoreceptor tyrosine-based inhibitory motif (ITIM). KLRG1 is expressed by subsets of NK, effector and memory T cells. KLRG1 inhibits cell activation and proliferation, and is a marker of T cell senescence. Binding of KLRG1 to E-, N-, or R- cadherins blocks phosphorylation of Akt and increases the expression of cell cycle inhibitors.

Antigen References: 1. Shi L, *et al.* 2014. *J. Immunol.* 192:649.