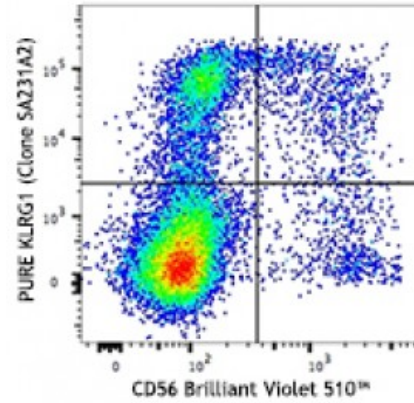


Purified anti-human KLRG1 (MAFA)

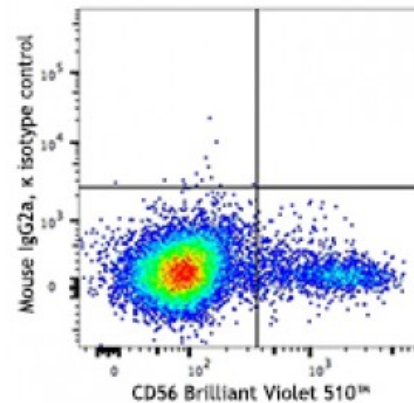
Catalog # / Size: 2438510 / 100 µg
Clone: SA231A2
Isotype: Mouse IgG2a, κ
Immunogen: Human KLRG1-transfected cells
Reactivity: Human
Preparation: The antibody was purified by affinity chromatography.
Formulation: Phosphate-buffered solution, pH 7.2, containing 0.09% sodium azide.
Concentration: 0.5



Human peripheral blood lymphocytes were stained with CD56 Brilliant Violet 510™ and purified KLRG1 (clone SA231A2, top) or purified mouse IgG2a, κ isotype control (bottom), followed by anti-mouse IgG PE.

Applications:

Applications: Flow Cytometry
Recommended Usage: Each lot of this antibody is quality control tested by immunofluorescent staining with flow cytometric analysis. For flow cytometric staining, the suggested use of this reagent is ≤1.0 microg per million cells in 100 microL volume. It is recommended that the reagent be titrated for optimal performance for each application.



Description: Killer cell lectin-like receptor subfamily G member 1 (KLRG1) is a 30 kD, type II membrane glycoprotein with one C-type lectin domain and one immunoreceptor tyrosine-based inhibitory motif (ITIM). KLRG1 is expressed by subsets of NK, effector and memory T cells. KLRG1 inhibits cell activation and proliferation, and is a marker of T cell senescence. Binding of KLRG1 to E-, N-, or R- cadherins blocks phosphorylation of Akt and increases the expression of cell cycle inhibitors.

Antigen References: 1. Shi L, *et al.* 2014. *J. Immunol.* 192:649.