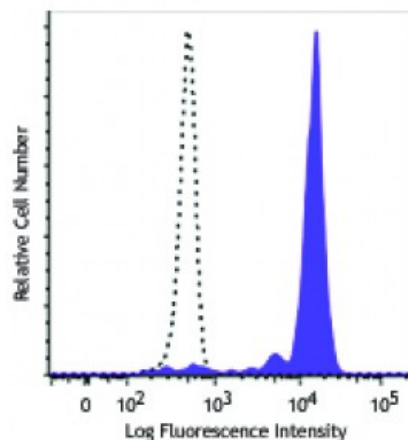


FITC anti-human CD14

Catalog # / Size:	2435580 / 100 tests 2435575 / 25 tests
Clone:	63D3
Isotype:	Mouse IgG1, κ
Immunogen:	Purified human peripheral blood monocytes.
Reactivity:	Human
Preparation:	The antibody was purified by affinity chromatography and conjugated with FITC under optimal conditions. The solution is free of unconjugated FITC and unconjugated antibody.
Formulation:	Phosphate-buffered solution, pH 7.2, containing 0.09% sodium azide and 0.2% (w/v) BSA (origin USA).
Concentration:	Lot-specific



Human peripheral blood monocytes were stained with FITC anti-human CD14 (clone 63D3) (filled histogram) or mouse IgG1, κ FITC isotype control (open histogram).

Applications:

Applications: Flow Cytometry

Recommended Usage: Each lot of this antibody is quality control tested by immunofluorescent staining with flow cytometric analysis. For flow cytometric staining, the suggested use of this reagent is 5 μ L per million cells or 5 μ L per 100 μ L of whole blood. It is recommended that the reagent be titrated for optimal performance for each application.

Application References: 1. Fridlender ZG, *et al.* 1999. *Hum. Immunol.* 11:1028.
2. Devitt A, *et al.* 1998. *Nature* 6675:505.

Description: CD14 is a 53-55 kD glycosylphosphatidylinositol (GPI)-linked membrane glycoprotein that is also known as the LPS receptor. CD14 is expressed at high levels on monocytes and macrophages, and at lower levels on granulocytes. Some dendritic cell populations such as interfollicular dendritic cells, reticular dendritic cells, and Langerhans cells have also been reported to express CD14. As a high-affinity receptor for LPS, CD14 is involved in the clearance of gram-negative pathogens and in the upregulation of adhesion molecules and cytokine expression in monocytes and neutrophils.

Antigen References: 1. Stocks SC, *et al.* 1990. *Biochem. J.* 268:275.
2. Wright SD, *et al.* 1990. *Science* 4975:1431.