

**PE/Dazzle™ 594 anti-human IgG Fc Recombinant**

**Catalog # / Size:** 2434595 / 25 tests  
2434600 / 100 tests

**Clone:** QA19A42

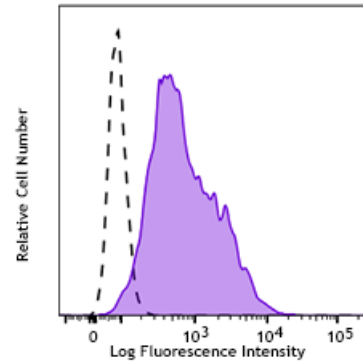
**Isotype:** Mouse IgG1, κ

**Reactivity:** Human

**Preparation:** The antibody was purified by affinity chromatography and conjugated with PE/Dazzle™ 594 under optimal conditions.

**Formulation:** Phosphate-buffered solution, pH 7.2, containing 0.09% sodium azide and 0.2% (w/v) BSA (origin USA)

**Concentration:** Lot-specific



Human DLL4 transfected CHO cells were incubated with recombinant human Notch 1-IgG Fc fusion protein, then stained with anti-human IgG Fc recombinant (clone QA19A42) PE/Dazzle™ 594 (filled histogram) or mouse IgG1, κ PE/Dazzle™ 594 isotype control (open histogram).

**Applications:**

**Applications:** Flow Cytometry

**Recommended Usage:** Each lot of this antibody is quality control tested by immunofluorescent staining with flow cytometric analysis. For flow cytometric staining, the suggested use of this reagent is 5 μL per million cells in 100 μL staining volume or 5 μL per 100 μL of whole blood. It is recommended that the reagent be titrated for optimal performance for each application.

\* PE/Dazzle™ 594 has a maximum excitation of 566 nm and a maximum emission of 610 nm.

**Description:** IgG Fc is a homodimer composed of the constant region of the two heavy chains that form the IgG molecule. The Fc fragment mediates opsonization, antibody dependent cellular cytotoxicity (ADCC), and complement activation through binding to Fc receptors such as CD16, CD32, CD64, and the complement factor C1.

**Antigen References:** 1. Paul WE. 2003. *Fundamental Immunology*. Lippincott Williams & Wilkins. Philadelphia PA.