

**Purified anti-human CD33**

**Catalog # / Size:** 2433010 / 100 µg  
2433005 / 25 µg

**Clone:** P67.6

**Isotype:** Mouse IgG1, κ

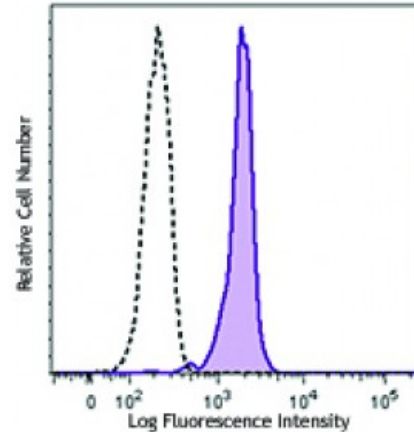
**Immunogen:** FMY9S5 cells expressing CD33 gene.

**Reactivity:** Human

**Preparation:** The antibody was purified by affinity chromatography.

**Formulation:** Phosphate-buffered solution, pH 7.2, containing 0.09% sodium azide.

**Concentration:** Lot-specific



Human peripheral blood monocytes were stained with purified CD33 (clone P67.6, filled histogram) or mouse IgG1, κ isotype control (open histogram) followed by anti-mouse IgG FITC.

**Applications:**

**Applications:** Flow Cytometry

**Recommended Usage:** Each lot of this antibody is quality control tested by immunofluorescent staining with flow cytometric analysis. For flow cytometric staining, the suggested use of this reagent is ≤0.5 microg per million cells in 100 microL volume. It is recommended that the reagent be titrated for optimal performance for each application.

**Application References:** 1. Hoyer J, *et al.* 2008. *Am. J. Clin. Pathol.* 129:316.

**Description:** CD33, also known as Siglec-3, gp67, and p67, is a 67 kD type I transmembrane glycoprotein. It is a sialoadhesion immunoglobulin superfamily member, which is expressed on myeloid progenitors, monocytes, granulocytes, dendritic cells, and mast cells. CD33 is absent on normal platelets, lymphocytes, erythrocytes, and hematopoietic stem cells. CD33 functions as a sialic acid-dependent cell adhesion molecule with carbohydrate/lectin binding activity.

**Antigen References:** 1. Favaloro E, *et al.* 1988. *Br. J. Haematol.* 69:163.  
2. Freeman S, *et al.* 1995. *Blood* 85:2005.