

PerCP/Cy5.5 anti-human CD18

Catalog # / Size: 2431580 / 100 tests
2431575 / 25 tests

Clone: CBR LFA-1/2

Isotype: Mouse IgG1, κ

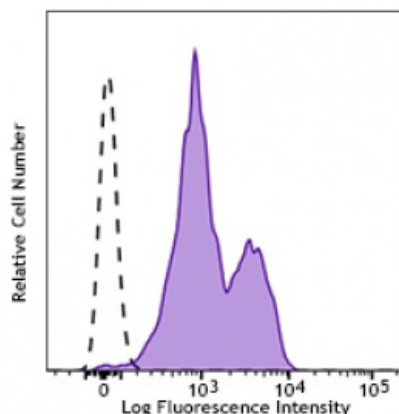
Immunogen: Purified human LFA-1

Reactivity: Human

Preparation: The antibody was purified by affinity chromatography and conjugated with PerCP/Cy5.5 under optimal conditions. The solution is free of unconjugated PerCP/Cy5.5 and unconjugated antibody.

Formulation: Phosphate-buffered solution, pH 7.2, containing 0.09% sodium azide and 0.2% (w/v) BSA (origin USA).

Concentration: Lot-specific



Human peripheral blood lymphocytes were stained with CD18 (clone CBR LFA-1/2) PerCP/Cy5.5 (filled histogram) or mouse IgG1, ÅÅÅ PerCP/Cy5.5 isotype control (open histogram).

Applications:

Applications: Flow Cytometry

Recommended Usage: Each lot of this antibody is quality control tested by immunofluorescent staining with flow cytometric analysis. For flow cytometric staining, the suggested use of this reagent is 5 μ l per million cells or 5 μ l per 100 μ l of whole blood. It is recommended that the reagent be titrated for optimal performance for each application.

* PerCP/Cy5.5 has a maximum absorption of 482 nm and a maximum emission of 690 nm.

Application Notes: Additional reported applications (for the relevant formats of this clone) include: activation of LFA-1 and MAC-1^{1,2}.

Application References: 1. Anderson DC, *et al.* 1987. *Annu. Rev. Med.* 38:175.
2. Springer TA. 1994. *Cell* 76:301.

Description: CD18, also known as integrin β 2 subunit, LFA-1 β subunit, and β 2 integrin, is a 90 - 95 kD type I glycoprotein. CD18 non-covalently associates with CD11a, CD11b, or CD11c. CD18 is expressed on all leukocytes. CD18 and associated α chains function in the adhesion and signaling in hematopoietic cells.

Antigen References: 1. Anderson DC, *et al.* 1987. *Annu. Rev. Med.* 38:175.
2. Springer TA. 1994. *Cell* 76:301.