

APC/Fire™ 750 anti-human CD18

Catalog # / Size: 2431570 / 100 tests
2431565 / 25 tests

Clone: CBR LFA-1/2

Isotype: Mouse IgG1, κ

Immunogen: Purified human LFA-1

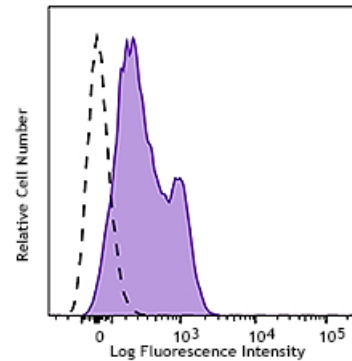
Reactivity: Human

Preparation: The antibody was purified by affinity chromatography and conjugated with APC/Fire™ 750 under optimal conditions.

Formulation: Phosphate-buffered solution, pH 7.2, containing 0.09% sodium azide and 0.2% (w/v) BSA (origin USA).

Workshop Number: II T7

Concentration: Lot-specific



Human peripheral blood lymphocytes were stained with CD18 (clone CBR LFA-1/2) APC/Fire™ 750 (filled histogram) or mouse IgG1, κ APC/Fire™ 750 isotype control (open histogram).

Applications:

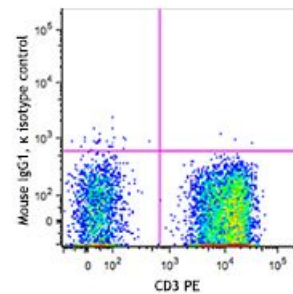
Applications: Flow Cytometry

Recommended Usage: Each lot of this antibody is quality control tested by immunofluorescent staining with flow cytometric analysis. For flow cytometric staining, the suggested use of this reagent is 5 µl per million cells in 100 µl staining volume or 5 µl per 100 µl of whole blood.

* APC/Fire™ 750 has a maximum excitation of 650 nm and a maximum emission of 787 nm.

Application Notes: Additional reported applications (for the relevant formats of this clone) include: activation of LFA-1 and MAC-1^{1,2}.

Application References: 1. Petruzzelli L, et al. 1995. *J. Immunol.* 155:854. (Activ)
2. Lu C, et al. 2001. *J. Immunol.* 166:5629. (Activ)



Description: CD18, also known as integrin β2 subunit, LFA-1 β subunit, and β2 integrin, is a 90 - 95 kD type I glycoprotein. CD18 non-covalently associates with CD11a, CD11b, or CD11c. CD18 is expressed on all leukocytes. CD18 and associated α chains function in the adhesion and signaling in hematopoietic cells.

Antigen References: 1. Anderson DC, et al. 1987. *Annu. Rev. Med.* 38:175.
2. Springer TA. 1994. *Cell* 76:301.