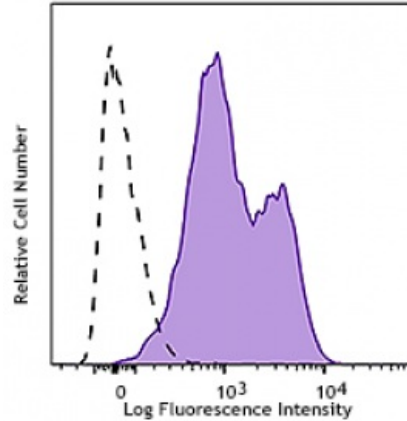


**PE/Cy7 anti-human CD18**

<b>Catalog # / Size:</b>	2431545 / 25 tests 2431550 / 100 tests
<b>Clone:</b>	CBR LFA-1/2
<b>Isotype:</b>	Mouse IgG1, $\kappa$
<b>Immunogen:</b>	Purified human LFA-1
<b>Reactivity:</b>	Human
<b>Preparation:</b>	The antibody was purified by affinity chromatography and conjugated with PE/Cy7 under optimal conditions. The solution is free of unconjugated PE/Cy7 and unconjugated antibody.
<b>Formulation:</b>	Phosphate-buffered solution, pH 7.2, containing 0.09% sodium azide and 0.2% (w/v) BSA (origin USA).
<b>Concentration:</b>	Lot-specific



Human peripheral blood lymphocytes were stained with CD18 (clone CBR LFA-1/2) PE/Cy7 (filled histogram) or mouse IgG1

**Applications:**

**Applications:** Flow Cytometry

**Recommended Usage:** Each lot of this antibody is quality control tested by immunofluorescent staining with flow cytometric analysis. For flow cytometric staining, the suggested use of this reagent is 5  $\mu$ l per million cells or 5  $\mu$ l per 100  $\mu$ l of whole blood. It is recommended that the reagent be titrated for optimal performance for each application.

**Application Notes:** Additional reported applications (for the relevant formats of this clone) include: activation of LFA-1 and MAC-1<sup>1,2</sup>.

**Application References:** 1. Anderson DC, *et al.* 1987. *Annu. Rev. Med.* 38:175.  
2. Springer TA. 1994. *Cell* 76:301.

**Description:** CD18, also known as integrin  $\beta$ 2 subunit, LFA-1  $\beta$  subunit, and  $\beta$ 2 integrin, is a 90 - 95 kD type I glycoprotein. CD18 non-covalently associates with CD11a, CD11b, or CD11c. CD18 is expressed on all leukocytes. CD18 and associated  $\alpha$  chains function in the adhesion and signaling in hematopoietic cells.

**Antigen References:** 1. Anderson DC, *et al.* 1987. *Annu. Rev. Med.* 38:175.  
2. Springer TA. 1994. *Cell* 76:301.