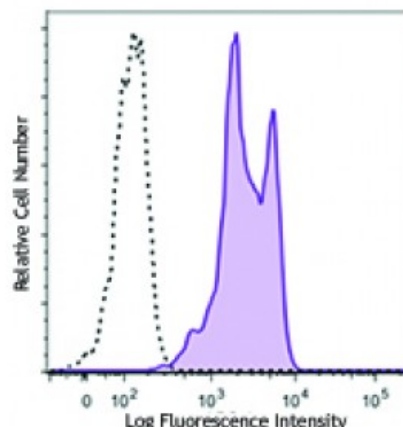


APC anti-human CD18

Catalog # / Size:	2431535 / 25 tests 2431540 / 100 tests
Clone:	CBR LFA-1/2
Isotype:	Mouse IgG1, κ
Immunogen:	Purified human LFA-1
Reactivity:	Human
Preparation:	The antibody was purified by affinity chromatography and conjugated with APC under optimal conditions. The solution is free of unconjugated APC and unconjugated antibody.
Formulation:	Phosphate-buffered solution, pH 7.2, containing 0.09% sodium azide and 0.2% (w/v) BSA (origin USA).
Concentration:	Lot-specific



Human peripheral blood lymphocytes were stained with CD18 (clone CBR LFA-1/2) APC (filled histogram) or mouse IgG1, κ APC isotype control (open histogram).

Applications:

Applications: Flow Cytometry

Recommended Usage: Each lot of this antibody is quality control tested by immunofluorescent staining with flow cytometric analysis. For flow cytometric staining, the suggested use of this reagent is 5 microL per million cells or 5 microL per 100 microL of whole blood. It is recommended that the reagent be titrated for optimal performance for each application.

Application Notes: Additional reported applications (for the relevant formats of this clone) include: activation of LFA-1 and MAC-1^{1,2}. The LEAF™ or Ultra-LEAF™ purified antibody (Endotoxin < EU/microg, Azide-Free, 0.2 μ m filtered) is recommended for function assays ([contact our custom solutions team](#)).

Application References: 1. Petruzzelli L, *et al.* 1995. *J. Immunol.* 155:854. (Activ)
2. Lu C, *et al.* 2001. *J. Immunol.* 166:5629. (Activ)

Description: CD18, also known as integrin β 2 subunit, LFA-1 β subunit, and β 2 integrin, is a 90 - 95 kD type I glycoprotein. CD18 non-covalently associates with CD11a, CD11b, or CD11c. CD18 is expressed on all leukocytes. CD18 and associated α chains function in the adhesion and signaling in hematopoietic cells.

Antigen References: 1. Anderson DC, *et al.* 1987. *Annu. Rev. Med.* 38:175.
2. Springer TA. 1994. *Cell* 76:301.