

FITC anti-human CD18

Catalog # / Size: 2431530 / 100 tests
2431525 / 25 tests

Clone: CBR LFA-1/2

Isotype: Mouse IgG1, κ

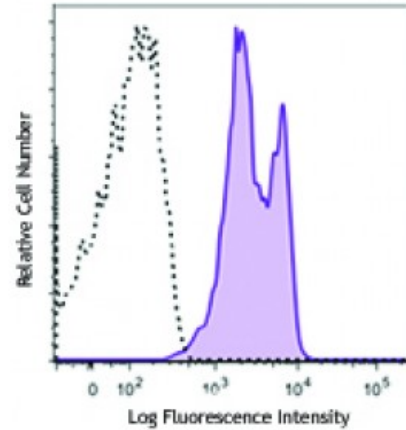
Immunogen: Purified human LFA-1

Reactivity: Human

Preparation: The antibody was purified by affinity chromatography and conjugated with FITC under optimal conditions. The solution is free of unconjugated FITC and unconjugated antibody.

Formulation: Phosphate-buffered solution, pH 7.2, containing 0.09% sodium azide and 0.2% (w/v) BSA (origin USA).

Concentration: 0.2



Human peripheral blood lymphocytes were stained with CD18 (clone CBR LFA-1/2) FITC (filled histogram) or mouse IgG1, κ FITC isotype control (open histogram).

Applications:

Applications: Flow Cytometry

Recommended Usage: Each lot of this antibody is quality control tested by immunofluorescent staining with flow cytometric analysis. For flow cytometric staining, the suggested use of this reagent is 5 microL per million cells or 5 microL per 100 microL of whole blood. It is recommended that the reagent be titrated for optimal performance for each application.

This product is subject to proprietary rights of Sirigen Inc. and is made and sold under license from Sirigen Inc. The purchase of this product conveys to the buyer a non-transferable right to use the purchased product for research purposes only. This product may not be resold or incorporated in any manner into another product for resale. Any use for therapeutics or diagnostics is strictly prohibited. This product is covered by U.S. Patent(s), pending patent applications and foreign equivalents.

Application Notes: Additional reported applications (for the relevant formats of this clone) include: activation of LFA-1 and MAC-1^{1,2}. The LEAF™ or Ultra-LEAF™ purified antibody (Endotoxin < EU/microg, Azide-Free, 0.2 μ m filtered) is recommended for function assays ([contact our custom solutions team](#)).

Application References: 1. Petruzzelli L, *et al.* 1995. *J. Immunol.* 155:854. (Activ)
2. Lu C, *et al.* 2001. *J. Immunol.* 166:5629. (Activ)

Description: CD18, also known as integrin β 2 subunit, LFA-1 β subunit, and β 2 integrin, is a 90 - 95 kD type I glycoprotein. CD18 non-covalently associates with CD11a, CD11b, or CD11c. CD18 is expressed on all leukocytes. CD18 and associated α chains function in the adhesion and signaling in hematopoietic cells.

Antigen References: 1. Anderson DC, *et al.* 1987. *Annu. Rev. Med.* 38:175.
2. Springer TA. 1994. *Cell* 76:301.