

PE anti-human TSPAN8

Catalog # / Size: 2418515 / 25 tests

Clone: TAL69

Isotype: Mouse IgG1, κ

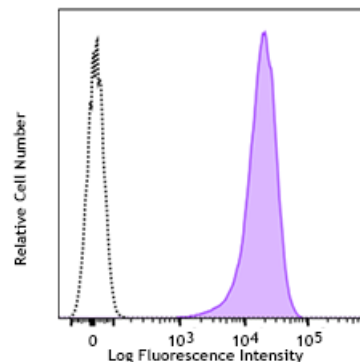
Immunogen: AsPC1 (Human)

Reactivity: Human

Preparation: The antibody was purified by affinity chromatography and conjugated with PE under optimal conditions.

Formulation: Phosphate-buffered solution, pH 7.2, containing 0.09% sodium azide and 0.2% (w/v) BSA (origin USA)

Concentration: Lot-specific



Human colon cancer cell line, HT-29, was stained with anti-human TSPAN8 PE (clone TAL69) (filled histogram) or mouse IgG1, κ PE isotype control (open histogram).

Applications:

Applications: Flow Cytometry

Recommended Usage: Each lot of this antibody is quality control tested by immunofluorescent staining with flow cytometric analysis. For flow cytometric staining, the suggested use of this reagent is 5 μ L per million cells in 100 μ L staining volume or 5 μ L per 100 μ L of whole blood. It is recommended that the reagent be titrated for optimal performance for each application.

Description: Tetraspanin 8 (TSPAN8) is a member of the transmembrane IV superfamily. It is a cell surface protein with four hydrophobic domains. It mediates signal transduction events that regulate cell development, activation, growth, and motility. It is expressed in gastric, colon, rectal, and pancreatic carcinomas.

Antigen References:

1. Szala S, *et al.* 1990. *Proc. Natl. Acad. Sci. USA* 87:6833.
2. Rana S, *et al.* 2011. *Int. J. Biochem. Cell Biol.* 43:106.
3. Nazarenko I, *et al.* 2010. *Cancer Res.* 70:1668.
4. Berthier-Vergnes O, *et al.* 2011. *Br. J. Cancer* 104:155.