

Purified anti-human CD22

Catalog # / Size: 2417505 / 25 µg
2417510 / 100 µg

Clone: S-HCL-1

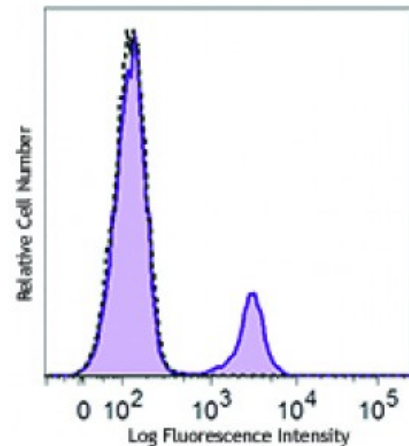
Isotype: Mouse IgG2b, κ

Reactivity: Human

Preparation: The antibody was purified by affinity chromatography.

Formulation: Phosphate-buffered solution, pH 7.2, containing 0.09% sodium azide.

Concentration: 0.1



Human peripheral blood lymphocytes were stained with purified CD22 (clone S-HCL-1, filled histogram) or purified mouse IgG2b, κ isotype control (open histogram), followed by anti-mouse IgG FITC.

Applications:

Applications: Flow Cytometry

Recommended Usage: Each lot of this antibody is quality control tested by immunofluorescent staining with flow cytometric analysis. For flow cytometric staining, the suggested use of this reagent is ≤0.125 microg per million cells in 100 microL volume. It is recommended that the reagent be titrated for optimal performance for each application.

This product is subject to proprietary rights of Sirigen Inc. and is made and sold under license from Sirigen Inc. The purchase of this product conveys to the buyer a non-transferable right to use the purchased product for research purposes only. This product may not be resold or incorporated in any manner into another product for resale. Any use for therapeutics or diagnostics is strictly prohibited. This product is covered by U.S. Patent(s), pending patent applications and foreign equivalents.

Application Notes:

1. Nitschke L. 2005. *Curr. Opin. Immunol.* 17:290
2. Foon Ka, *et al.* 1986. *Blood.* 68:297
3. Schwarting R, *et al.* 1985. *Blood.* 65:974
4. Campana D, *et al.* 1985. *J. Immunol.* 134:1524

Description: CD22 is a 130 kD type I transmembrane glycoprotein also known as Siglec-2 and BL-CAM and is a member of the immunoglobulin superfamily (sialoadhesion subgroup). CD22 is expressed in the cytoplasm of pro-B and pre-B cells, and on the surface of mature B and activated B cells, but not on plasma cells. CD22 is present in the B cell receptor complex and associates with SHP-1, Syk, Lck, Lyn, and phospholipase Cγ1. A primary function of CD22 is thought to be in limiting antigen receptor signaling by modulating B cell activation threshold. CD22 has been shown to bind to CD45RO and CD75, although the natural ligands for this molecule remain controversial.

Antigen 1. Clark E. 1993. *J. Immunol.* 150:4715.

References: 2. Shan D, *et al.* 1995. *J. Immunol.* 154:4466.