

**Alexa Fluor® 700 anti-human CD11a/CD18 (LFA-1)**

**Catalog # / Size:** 2417105 / 25 tests  
2417110 / 100 tests

**Clone:** m24

**Isotype:** Mouse IgG1, κ

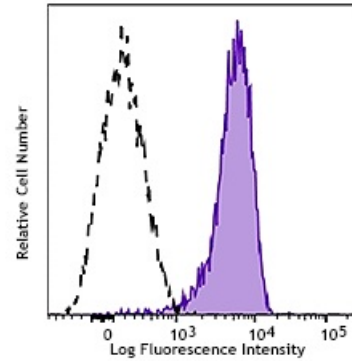
**Immunogen:** Fibronectin-purified human monocytes

**Reactivity:** Human

**Preparation:** The antibody was purified by affinity chromatography and conjugated with Alexa Fluor® 700 under optimal conditions. The solution is free of unconjugated Alexa Fluor® 700.

**Formulation:** Phosphate-buffered solution, pH 7.2, containing 0.09% sodium azide and 0.2% (w/v) BSA (origin USA).

**Concentration:** Lot-specific



PMA-stimulated human peripheral blood granulocytes were stained with CD11a/CD18 (LFA-1) (clone m24) Alexa Fluor® 700 (filled histogram) or mouse IgG1, κ Alexa Fluor® 700 isotype control (open histogram).

**Applications:**

**Applications:** Flow Cytometry

**Recommended Usage:** Each lot of this antibody is quality control tested by immunofluorescent staining with flow cytometric analysis. For flow cytometric staining, the suggested use of this reagent is 5 µl per million cells in 100 µl staining volume or 5 µl per 100 µl of whole blood.

\* Alexa Fluor® 700 has a maximum emission of 719 nm when it is excited at 633 nm / 635 nm. Prior to using Alexa Fluor® 700 conjugate for flow cytometric analysis, please verify your flow cytometer's capability of exciting and detecting the fluorochrome.

**Application Notes:** Clone m24 can be used as a reporter of the activation state of integrin receptor in response to exposure with Mg<sup>2+</sup> or Mn<sup>2+</sup>.

- Application References:**
- Hogg N. *et al.* 1985. *Cell Immunol.* 92:247.
  - McDowall A. *et al.* 2003. *J. Clin. Invest.* 111:51.

**Description:** CD11/CD18 belongs to the integrin family of proteins. It is heterodimeric cell surface receptor expressed on all leukocytes. CD18, in association with integrin α chain CD11a, CD11b, and CD11c forms LFA-1, Mac-1, and α<sub>x</sub>β<sub>2</sub>, respectively, and plays an important role in leukocyte adhesion. CD11/CD18 complexes bind ICAM-1 (CD54), ICAM-2 (CD102), ICAM-3 (CD50), iC3b, and fibrinogen. Clone m24 binds the extended/open high affinity conformation of CD11a/CD18. The antibody can be used as a reporter of the activation state of the integrin receptor in response to exposure to Mg<sup>2+</sup> or Mn<sup>2+</sup>.

- Antigen References:**
- Anderson D, *et al.* 1987. *Annu. Rev. Med.* 38:175.
  - Springer T. 1994. *Cell* 76:301.

