

**PerCP/Cy5.5 anti-human CD11a/CD18 (LFA-1)**

**Catalog # / Size:** 2417070 / 100 tests  
2417065 / 25 tests

**Clone:** m24

**Isotype:** Mouse IgG1,  $\kappa$

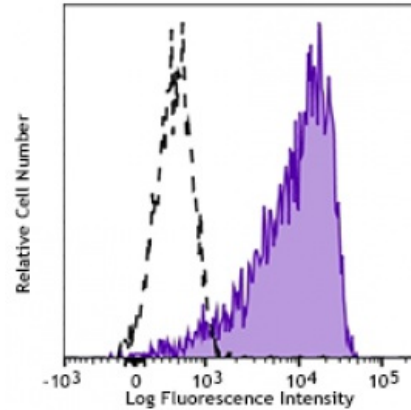
**Immunogen:** Fibronectin-purified human monocytes

**Reactivity:** Human

**Preparation:** The antibody was purified by affinity chromatography and conjugated with PerCP/Cy5.5 under optimal conditions. The solution is free of unconjugated PerCP/Cy5.5 and unconjugated antibody.

**Formulation:** Phosphate-buffered solution, pH 7.2, containing 0.09% sodium azide and 0.2% (w/v) BSA (origin USA).

**Concentration:** Lot-specific



PMA-stimulated human peripheral blood granulocytes were stained with CD11/CD18 (clone m24) PerCP/Cy5.5 (filled histogram) or mouse IgG1,  $\kappa$  PerCP/Cy5.5 isotype control (open histogram).

**Applications:**

**Applications:** Flow Cytometry

**Recommended Usage:** Each lot of this antibody is quality control tested by immunofluorescent staining with flow cytometric analysis. For flow cytometric staining, the suggested use of this reagent is 5  $\mu$ l per million cells or 5  $\mu$ l per 100  $\mu$ l of whole blood. It is recommended that the reagent be titrated for optimal performance for each application.

\* PerCP/Cy5.5 has a maximum absorption of 482 nm and a maximum emission of 690 nm.

**Application Notes:** Clone m24 can be used as a reporter of the activation state of integrin receptor in response to exposure with  $Mg^{2+}$  or  $Mn^{2+}$ .

**Application References:** 1. Anderson D, *et al.* 1987. *Annu. Rev. Med.* 38:175.  
2. Springer T. 1994. *Cell* 76:301.

**Description:** CD11/CD18 belongs to the integrin family of proteins. It is heterodimeric cell surface receptor expressed on all leukocytes. CD18, in association with integrin  $\alpha$  chain CD11a, CD11b, and CD11c forms LFA-1, Mac-1, and  $\alpha_X\beta_2$ , respectively, and plays an important role in leukocyte adhesion. CD11/CD18 complexes bind ICAM-1 (CD54), ICAM-2 (CD102), ICAM-3 (CD50), iC3b, and fibrinogen. Clone m24 binds the extended/open high affinity conformation of CD11a/CD18. The antibody can be used as a reporter of the activation state of the integrin receptor in response to exposure to  $Mg^{2+}$  or  $Mn^{2+}$ .

**Antigen References:** 1. Anderson D, *et al.* 1987. *Annu. Rev. Med.* 38:175.  
2. Springer T. 1994. *Cell* 76:301.