

**Alexa Fluor® 700 anti-human CD19**

**Catalog # / Size:** 2415170 / 100 tests  
2415165 / 25 tests

**Clone:** SJ25C1

**Isotype:** Mouse IgG1,  $\kappa$

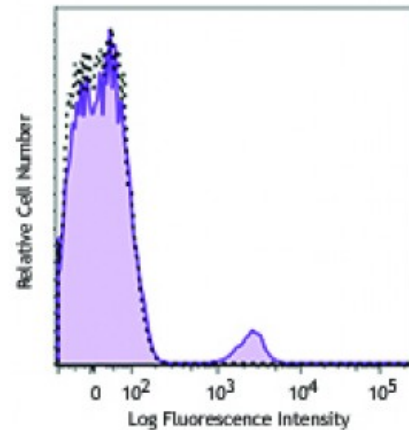
**Immunogen:** NALM1 + NALM16 cells

**Reactivity:** Human

**Preparation:** The antibody was purified by affinity chromatography and conjugated with Alexa Fluor® 700 under optimal conditions.

**Formulation:** Phosphate-buffered solution, pH 7.2, containing 0.09% sodium azide and 0.2% (w/v) BSA (origin USA).

**Concentration:** Lot-specific



Human peripheral blood lymphocytes were stained with CD19 (clone SJ25C1) Alexa Fluor® 700 (filled histogram) or mouse IgG1,  $\kappa$  Alexa Fluor® 700 isotype control (open histogram).

**Applications:**

- Applications:** Flow Cytometry
- Recommended Usage:** Each lot of this antibody is quality control tested by immunofluorescent staining with flow cytometric analysis. For flow cytometric staining, the suggested use of this reagent is 5 microL per million cells or 5 microL per 100 microL of whole blood. It is recommended that the reagent be titrated for optimal performance for each application.
- \* Alexa Fluor® 700 has a maximum emission of 719 nm when it is excited at 633 nm / 635 nm. Prior to using Alexa Fluor® 700 conjugate for flow cytometric analysis, please verify your flow cytometer's capability of exciting and detecting the fluorochrome.

**Description:** CD19 is a 95 kD type I transmembrane glycoprotein also known as B4. It is a member of the immunoglobulin superfamily expressed on B cells (from pro-B to blastoid B cells, absent on plasma cells) and follicular dendritic cells. CD19 is involved in B cell development, activation, and differentiation. CD19 forms a complex with CD21 (CR2) and CD81 (TAPA-1), and functions as a BCR co-receptor.

**Antigen References:** 1. Tedder T, *et al.* 1994. *Immunol. Today* 15:437.  
2. Bradbury L, *et al.* 1993. *J. Immunol.* 151:2915.