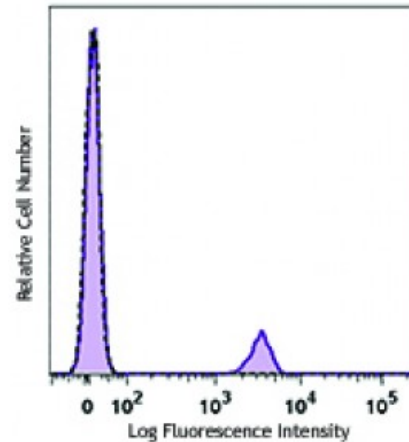


PE anti-human CD19

- Catalog # / Size:** 2415020 / 100 tests
2415015 / 25 tests
- Clone:** SJ25C1
- Isotype:** Mouse IgG1, κ
- Immunogen:** NALM1 + NALM16 cells
- Reactivity:** Human
- Preparation:** The antibody was purified by affinity chromatography and conjugated with PE under optimal conditions. The solution is free of unconjugated PE and unconjugated antibody.
- Formulation:** Phosphate-buffered solution, pH 7.2, containing 0.09% sodium azide and 0.2% (w/v) BSA (origin USA).
- Concentration:** Lot-specific



Human peripheral blood lymphocytes were stained with CD19 (clone SJ25C1) PE (filled histogram) or mouse IgG1, κ PE isotype control (open histogram).

Applications:

- Applications:** Flow Cytometry
- Recommended Usage:** Each lot of this antibody is quality control tested by immunofluorescent staining with flow cytometric analysis. For flow cytometric staining, the suggested use of this reagent is 5 microL per million cells or 5 microL per 100 microL of whole blood. It is recommended that the reagent be titrated for optimal performance for each application.

Description: CD19 is a 95 kD type I transmembrane glycoprotein also known as B4. It is a member of the immunoglobulin superfamily expressed on B cells (from pro-B to blastoid B cells, absent on plasma cells) and follicular dendritic cells. CD19 is involved in B cell development, activation, and differentiation. CD19 forms a complex with CD21 (CR2) and CD81 (TAPA-1), and functions as a BCR co-receptor.

- Antigen** 1. Tedder T, *et al.* 1994. *Immunol. Today* 15:437.
- References:** 2. Bradbury L, *et al.* 1993. *J. Immunol.* 151:2915.