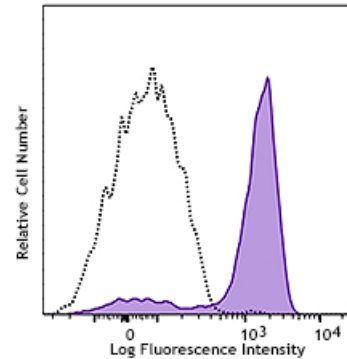


APC/Cyanine7 anti-human CD191 (CCR1)

Catalog # / 2414585 / 25 tests
Size: 2414590 / 100 tests
Clone: 5F10B29
Isotype: Mouse IgG1, κ
Immunogen: Human CCR1 transfected cells
Reactivity: Human
Preparation: The antibody was purified by affinity chromatography and conjugated with APC/Cyanine7 under optimal conditions.
Formulation: Phosphate-buffered solution, pH 7.2, containing 0.09% sodium azide and 0.2% (w/v) BSA (origin USA)
Concentration: Lot-specific



Human peripheral blood monocytes were stained with CD191 (clone 5F10B29) APC/Cyanine7 (filled histogram) or mouse IgG1, κ APC/Cyanine7 isotype control (open histogram).

Applications:

Applications: Flow Cytometry

Recommended Usage: Each lot of this antibody is quality control tested by immunofluorescent staining with flow cytometric analysis. For flow cytometric staining, the suggested use of this reagent is 5 μ L per million cells in 100 μ L staining volume or 5 μ L per 100 μ L of whole blood. It is recommended that the reagent be titrated for optimal performance for each application.

Description: CD191, also known as CCR1, is a 41 kD, G-protein coupled receptor expressed predominantly by monocytes. CCR1 is also expressed by a subset of T cells and eosinophils. CCR1 positive cells can migrate in response to a CCL3 and CCL5 gradient. CCR1 knock-out studies suggest that this molecule plays an important role in inflammation and susceptibility to viruses and parasites.

- Antigen References:**
1. Su SB, *et al.* 1996. *J. Leuko. Biol.* 60:658.
 2. Su S, *et al.* 1997. *Blood.* 90:605.
 3. Ayehunie S, *et al.* 1997. *Blood.* 90:1379.
 4. Gerard C, *et al.* 1997. *J. Clin. Invest.* 100:2022.
 5. Tiffany HL, *et al.* 1998. *J. Immunol.* 160:1385.
 6. Gilliland CT, *et al.* 2013. *J. Biol. Chem.* 288:32194.
 7. Bednar F, *et al.* 2014. *J. Immunol.* 192:5305.