

KIRAVIA Blue 520™ anti-human CD56 (NCAM)

Catalog # / Size: 2412830 / 100 tests
2412825 / 25 tests

Clone: 5.1H11

Isotype: Mouse IgG1, κ

Immunogen: Human myotube cells

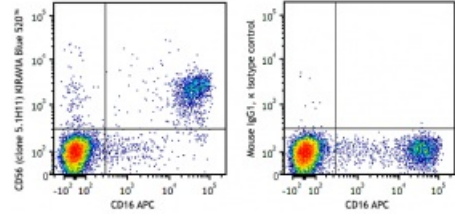
Reactivity: Human

Preparation: The antibody was purified by affinity chromatography and conjugated with KIRAVIA Blue 520™ under optimal conditions.

Formulation: Phosphate-buffered solution, pH 7.2, containing 0.09% sodium azide and 0.2% (w/v) BSA (origin USA).

Workshop Number: V 5T CD27.03

Concentration: Lot-specific

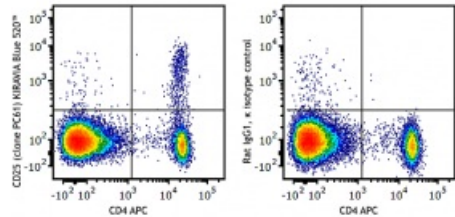


Human Peripheral blood lymphocytes were stained with CD16 APC and CD56 (NCAM) (clone 5.1H11) KIRAVIA Blue 520™ (left) or mouse IgG1, κ KIRAVIA Blue 520™ isotype control (right).

Applications:

Applications: Flow Cytometry

Recommended Usage: Each lot of this antibody is quality control tested by immunofluorescent staining with flow cytometric analysis. For flow cytometric staining, the suggested use of this reagent is 5 μL per million cells in 100 μL staining volume or 5 μL per 100 μL of whole blood. It is recommended that the reagent be titrated for optimal performance for each application.



C57BL/6 mouse splenocytes were stained with CD4 APC and CD25 (clone PC61) KIRAVIA Blue 520™ (left) or rat IgG1, κ KIRAVIA Blue 520™ isotype control (right).

* KIRAVIA Blue 520™ has an excitation maximum of 495 nm, and a maximum emission of 520 nm.

Application Notes: Additional reported applications (for the relevant formats) include: immunohistochemical staining of formalin-fixed paraffin-embedded frozen tissue sections¹, immunofluorescent staining², and ELISA³.

- Application References:**
1. Walsh FS, *et al.* 1981. *Nature* 289:60. (FC)
 2. Pavlath GK, *et al.* 1986. *J. Cell Biol.* 102:124. (FC)
 3. Pavlath GK, *et al.* 1989. *Nature* 337:570. (FC)
 4. Pulido R, *et al.* 1988. *J. Immunol.* 140:3851. (FC)

Description: CD56 is a single transmembrane glycoprotein also known as NCAM (neural cell adhesion molecule), Leu-19, or NKH1. It is a member of the Ig superfamily. The 140 kD isoform is expressed on NK and NKT cells. CD56 is also expressed in the brain (cerebellum and cortex) and at neuromuscular junctions. Certain large granular lymphocyte (LGL) leukemias, small-cell lung carcinomas, neuronal derived tumors, myelomas, and myeloid leukemias also express CD56. CD56 plays a role in homophilic and heterophilic adhesion via binding to itself or heparan sulfate.

Antigen
References:

1. Lanier L, *et al.* 1991. *J. Immunol.* 146:4421
2. Hemperly J, *et al.* 1990. *J. Mol. Neurosci.* 2:71
3. Cremer H, *et al.* 1994. *Nature* 367:455.