

**Brilliant Violet 785™ anti-human CD56 (NCAM)**

**Catalog # / Size:** 2412745 / 25 tests  
2412750 / 100 tests

**Clone:** 5.1H11

**Isotype:** Mouse IgG1,  $\kappa$

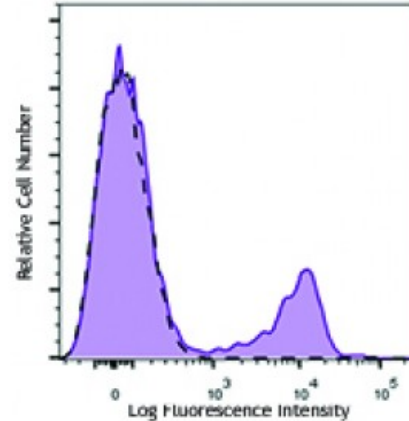
**Immunogen:** Human myotube cells.

**Reactivity:** Human

**Preparation:** The antibody was purified by affinity chromatography and conjugated with Brilliant Violet 785™ under optimal conditions. The solution is free of unconjugated Brilliant Violet 785™ and unconjugated antibody.

**Formulation:** Phosphate-buffered solution, pH 7.2, containing 0.09% sodium azide and BSA (origin USA).

**Concentration:** Lot-specific



Human peripheral blood lymphocytes stained with CD56 (clone 5.1H11) Brilliant Violet 785™ (filled histogram) or mouse IgG1,  $\kappa$  Brilliant Violet 785™ isotype control (open histogram).

**Applications:**

**Applications:** Flow Cytometry

**Recommended Usage:** Each lot of this antibody is quality control tested by immunofluorescent staining with flow cytometric analysis. For flow cytometric staining, the suggested use of this reagent is  $\leq 5$  microL per million cells or 5 microL per 100 microL of whole blood. It is recommended that the reagent be titrated for optimal performance for each application.

Brilliant Violet 785™ excites at 405 nm and emits at 785 nm. The bandpass filter 780/60 nm is recommended for detection, although filter optimization may be required depending on other fluorophores used. **Be sure to verify that your cytometer configuration and software setup are appropriate for detecting this channel.** Refer to your instrument manual or manufacturer for support. Brilliant Violet 785™ is a trademark of Sirigen Group Ltd.

**Application Notes:** For *in vivo* studies or highly sensitive assays, we recommend Ultra-LEAF™ purified antibody (Cat. No. 362548) with a lower endotoxin limit than standard LEAF™ purified antibodies (Endotoxin  $< 0.01$  EU/microg).

**Application References:**

1. Walsh FS, *et al.* 1981. *Nature* 289:60. (FC)
2. Pavlath GK, *et al.* 1986. *J. Cell Biol.* 102:124. (FC)
3. Pavlath GK, *et al.* 1989. *Nature* 337:570. (FC)
4. Pulido R, *et al.* 1988. *J. Immunol.* 140:3851. (FC)

**Description:** CD56 is a single transmembrane glycoprotein also known as NCAM (neural cell adhesion molecule), Leu-19, or NKH1. It is a member of the Ig superfamily. The 140 kD isoform is expressed on NK and NKT cells. CD56 is also expressed in the brain (cerebellum and cortex) and at neuromuscular junctions. Certain large granular lymphocyte (LGL) leukemias, small-cell lung carcinomas, neuronal derived tumors, myelomas, and myeloid leukemias also express CD56. CD56 plays a role in homophilic and heterophilic adhesion via binding to itself or heparan sulfate.

- Antigen**
- References:**
1. Lanier L, *et al.* 1991. *J. Immunol.* 146:4421
  2. Hemperly J, *et al.* 1990. *J. Mol. Neurosci.* 2:71
  3. Cremer H, *et al.* 1994. *Nature* 367:455.