

**PE anti-human CD56 (NCAM)**

**Catalog # / Size:** 2412540 / 100 tests  
 2412535 / 25 tests

2412620 / 100 µg

**Clone:** 5.1H11

**Isotype:** Mouse IgG1, κ

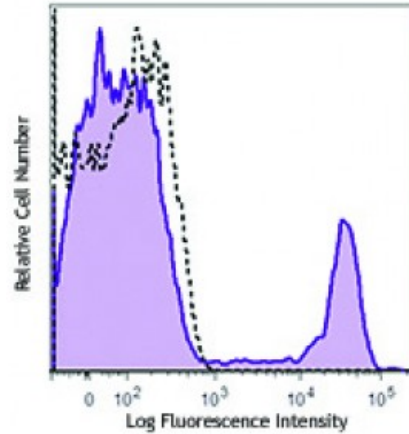
**Immunogen:** Human myotube cells.

**Reactivity:** Human

**Preparation:** The antibody was purified by affinity chromatography and conjugated with PE under optimal conditions. The solution is free of unconjugated PE and unconjugated antibody.

**Formulation:** microg size: Phosphate-buffered solution, pH 7.2, containing 0.09% sodium azide.  
 test sizes: Phosphate-buffered solution, pH 7.2, containing 0.09% sodium azide and 0.2% (w/v) BSA (origin USA).

**Concentration:** microg sizes: 0.2 mg/ml  
 test sizes: lot-specific



Human peripheral blood lymphocytes were stained with CD56 (clone 5.1H11) PE (filled histogram) or mouse IgG1, κ PE isotype control (open histogram).

**Applications:**

**Applications:** Flow Cytometry

**Recommended Usage:** Each lot of this antibody is quality control tested by immunofluorescent staining with flow cytometric analysis. For flow cytometric staining using the microg size, the suggested use of this reagent is ≤0.4 microg per million cells in 100 microL volume. For flow cytometric staining using test sizes, the suggested use of this reagent is 5 microL per million cells or 5 microL per 100 microL of whole blood. It is recommended that the reagent be titrated for optimal performance for each application.

**Application Notes:** For *in vivo* studies or highly sensitive assays, we recommend Ultra-LEAF™ purified antibody (Cat. No. 362548) with a lower endotoxin limit than standard LEAF™ purified antibodies (Endotoxin <0.01 EU/microg).

**Application References:**

- Walsh FS, *et al.* 1981. *Nature* 289:60. (FC)
- Pavlath GK, *et al.* 1986. *J. Cell Biol.* 102:124. (FC)
- Pavlath GK, *et al.* 1989. *Nature* 337:570. (FC)
- Pulido R, *et al.* 1988. *J. Immunol.* 140:3851. (FC)

**Description:** CD56 is a single transmembrane glycoprotein also known as NCAM (neural cell adhesion molecule), Leu-19, or NKH1. It is a member of the Ig superfamily. The 140 kD isoform is expressed on NK and NKT cells. CD56 is also expressed in the brain (cerebellum and cortex) and at neuromuscular junctions. Certain large granular lymphocyte (LGL) leukemias, small-cell lung carcinomas, neuronal derived tumors, myelomas, and myeloid leukemias also express CD56. CD56 plays a role in homophilic and heterophilic adhesion via binding to itself or heparan sulfate.

**Antigen** 1. Lanier L, *et al.* 1991. *J. Immunol.* 146:4421

- References:**
2. Hemperly J, *et al.* 1990. *J. Mol. Neurosci.* 2:71
  3. Cremer H, *et al.* 1994. *Nature* 367:455.