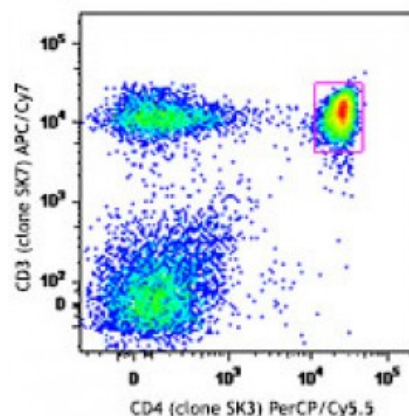


Human Naïve/Memory T cell ID Panel

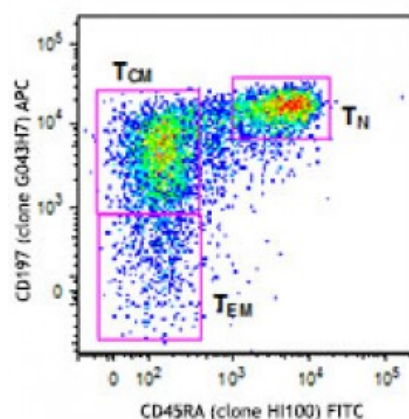
Catalog # / Size:	2411005 / 50 tests
Clone:	SK7, SK3, HI100, G043H7
Isotype:	Mouse IgG1, Mouse IgG2a, Mouse IgG2b
Reactivity:	Human
Preparation:	This reagent contains one vial each of APC/Cy7 conjugated anti-CD3 (clone SK7), PerCP/Cy5.5 conjugated anti-CD4 (clone SK3), FITC conjugated anti-CD45RA (clone HI100), and APC conjugated anti-CD197 (clone G043H7) at optimal concentration for four-color flow cytometry.
Formulation:	Phosphate-buffered solution, pH 7.2, containing 0.09% sodium azide and 0.2% (w/v) BSA (origin USA).
Concentration:	Lot-specific



Human peripheral blood lymphocytes were stained using the Human Naïve/Memory T cell ID Panel consisting of CD3 APC/Cy7, CD4 PerCP/Cy5.5, CD45RA FITC and CD197 APC. Dot plots depict CD3⁺CD4⁺ T cells (top) and CD45RA⁺CC (bottom).

Applications:

Applications:	Flow Cytometry
Recommended Usage:	Each lot of these antibodies is quality control tested by immunofluorescent staining with flow cytometric analysis. For flow cytometric staining, the suggested use of this reagent is 20 microL per million cells or 20 microL per 100 microL of whole blood. It is recommended that the reagent be titrated for optimal performance for each application.
Application Notes:	This product consists of four antibody vials: CD3 APC/Cy7, CD4 PerCP/Cy5.5, CD45RA FITC, and CD197 APC.



Description: CD4⁺ T cells can be subdivided into naïve, memory, and effector subsets based on their expression of CD45RA and CCR7. Naïve T cells express high levels of CD45RA and CCR7, whereas memory T cells express variable levels of these markers. Expression of CCR7 and CD45RA allows differentiation of memory T cells into central (CCR7⁺CD45RA⁻) and effector memory (CCR7⁺CD45RA⁺) subsets. This panel of antibodies is designed for characterizing these three CD4⁺ T cell subsets, which may exhibit variations following antigenic stimulation such as viral infection or vaccination.

Antigen References:	1. Barclay N, <i>et al.</i> 1993. The Leucocyte FactsBook. Academic Press. San Diego. 2. Beverley P, <i>et al.</i> 1981. <i>Eur. J. Immunol.</i> 11:329. 3. Lanier L, <i>et al.</i> 1986. <i>J. Immunol.</i> 137:2501.
----------------------------	--

4. Center