

**PE/Dazzle™ 594 anti-human CD194 (CCR4)**

**Catalog # / Size:** 2397100 / 100 tests  
2397095 / 25 tests

**Clone:** L291H4

**Isotype:** Mouse IgG1, κ

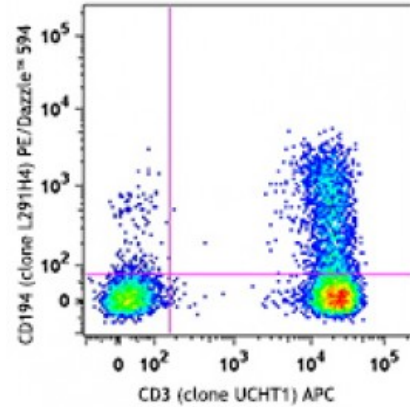
**Immunogen:** Human CCR4 transfected cells

**Reactivity:** Human

**Preparation:** The antibody was purified by affinity chromatography and conjugated with PE/Dazzle™ 594 under optimal conditions. The solution is free of unconjugated PE/Dazzle™ 594 and unconjugated antibody.

**Formulation:** Phosphate-buffered solution, pH 7.2, containing 0.09% sodium azide and 0.2% (w/v) BSA (origin USA).

**Concentration:** Lot-specific

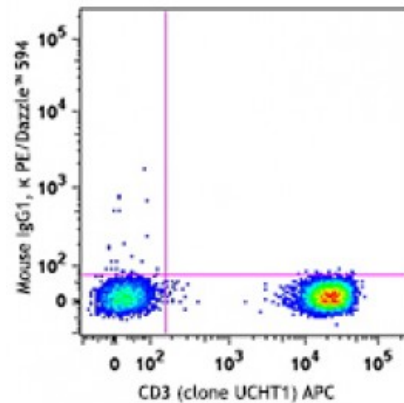


Human peripheral blood lymphocytes were stained with CD3 APC and CD194 (clone L291H4) PE/Dazzle™ 594 (top) or mouse IgG1, κ PE/Dazzle™ 594 isotype control (bottom).

**Applications:**

**Applications:** Flow Cytometry

**Recommended Usage:** Each lot of this antibody is quality control tested by immunofluorescent staining with flow cytometric analysis. For flow cytometric staining, the suggested use of this reagent is 5 microL per million cells or 5 microL per 100 microL of whole blood. It is recommended that the reagent be titrated for optimal performance for each application.



\* PE/Dazzle™ 594 has a maximum excitation of 566 nm and a maximum emission of 610 nm.

**Description:** CD194, also known as CCR4, is a CC chemokine receptor. It binds CCL17 and CCL22 and is expressed on a subset of T and B cells, basophils, monocytes, and NK cells. Human Th2 cells are characterized by the expression of CCR4 and CCR8, and these receptors are regulated differently during Th2 development. Human peripheral blood Tregs can be divided into two distinct populations based on the expression of CCR4. Freshly isolated Tregs express CCR4 and presumably represent memory-type Tregs, and CCR4<sup>-</sup> Tregs require CD3-mediated activation to acquire a regulatory activity. Depletion of CCR4<sup>+</sup> T cells leads to Th1-type polarization of CD4<sup>+</sup> T cells and augmentation of CD8<sup>+</sup> T cell responses to tumor antigens. CCR4 and its ligands are important for the recruitment of memory T cells into the skin in various cutaneous immune diseases.

**Antigen References:** 1. Katschke KJ, *et al.* 2001 *Arthritis Rheum.* 44:1022.  
2. Colantonio L, *et al.* 2002 *Eur. J. Immunol.* 32:1264.

3. Jakubzick C *et al.* 2004 *Am. J. Pathol.* 165:1211.
4. Morimoto Y, *e*