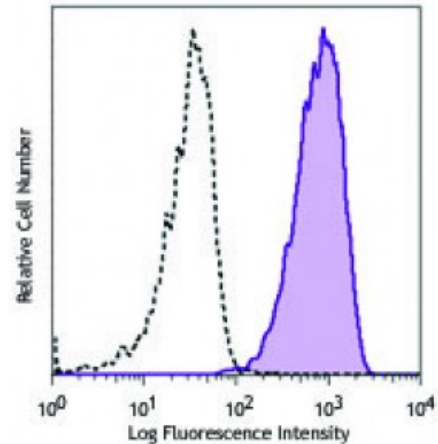


APC anti-human ROR1

Catalog # / Size:	2389030 / 100 tests 2389025 / 25 tests
Clone:	2A2
Isotype:	Mouse IgG1, κ
Immunogen:	ROR1-Fc fusion protein
Reactivity:	Human
Preparation:	The antibody was purified by affinity chromatography and conjugated with APC under optimal conditions. The solution is free of unconjugated APC and unconjugated antibody.
Formulation:	Phosphate-buffered solution, pH 7.2, containing 0.09% sodium azide and 0.2% (w/v) BSA (origin USA).
Concentration:	Lot-specific



NCCIT cells were stained with ROR1 (clone 2A2) APC (filled histogram) or mouse IgG1, κ APC isotype control (open histogram).

Applications:

Applications: Flow Cytometry

Recommended Usage: Each lot of this antibody is quality control tested by immunofluorescent staining with flow cytometric analysis. For flow cytometric staining, the suggested use of this reagent is 5 μ L per million cells or 5 μ L per 100 μ L of whole blood. It is recommended that the reagent be titrated for optimal performance for each application.

Application Notes: Clone 2A2 binds to the membrane distal Ig-domain of ROR1. Clone 2A2 has also been shown to exhibit cross reactivity towards mouse ROR12.

Application References: 1. Dave H, *et al.* 2012. *PLoS One* 7:e52655. (FC)
2. Baskar S, *et al.* 2012. *MAbs*. 4:349. (FC)

Description: ROR1, also known as NTRKR1, is a type I transmembrane protein and member of the ROR subfamily of surface receptors. ROR1 consists of one frizzled domain, one Ig-like C2-type domain, one kringle domain, and one kinase domain with no catalytic activity. ROR1 is expressed on embryonic tissue, in the central nervous system and on some cancer cells, and is used as a marker for B-cell chronic lymphocytic leukemia. Wnt5a has been identified as a ligand for ROR1.

Antigen References: 1. Bicocca VT, *et al.* 2012. *Cancer Cell*. 22:656.
2. Zhang S, *et al.* 2012. *PLoS One* 7:e31127.
3. Uhrmacher S, *et al.* 2011. *Leuk Res*. 35:1360.
4. Yang J, *et al.* 2011. *PLoS*