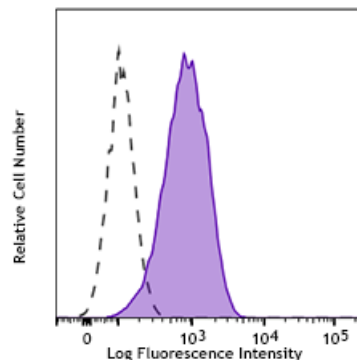


# KIRAVIA Blue 520™ anti-human CD269 (BCMA)

**Catalog # /** 2387640 / 100 tests  
**Size:** 2387635 / 25 tests  
**Clone:** 19F2  
**Isotype:** Mouse IgG2a,  $\kappa$   
**Immunogen:** BCMA-mouse IgG Fc fusion protein  
**Reactivity:** Human  
**Preparation:** The antibody was purified by affinity chromatography and conjugated with KIRAVIA Blue 520™ under optimal conditions.  
**Formulation:** Phosphate-buffered solution, pH 7.2, containing 0.09% sodium azide and 0.2% (w/v) BSA (origin USA).  
**Concentration:** Lot-specific



Human myeloma cell line U266 was stained with anti-human CD269 (BCMA) (clone 19F2) KIRAVIA Blue 520™ (filled histogram) or mouse IgG2a,  $\kappa$  KIRAVIA Blue 520™ isotype control (open histogram).

## Applications:

**Applications:** Flow Cytometry

**Recommended Usage:** Each lot of this antibody is quality control tested by immunofluorescent staining with flow cytometric analysis. For flow cytometric staining, the suggested use of this reagent is 5  $\mu$ L per million cells in 100  $\mu$ L staining volume or 5  $\mu$ L per 100  $\mu$ L of whole blood. It is recommended that the reagent be titrated for optimal performance for each application.

\* KIRAVIA Blue 520™ has an excitation maximum of 495 nm, and a maximum emission of 520 nm.

**Description:** CD269, also known as B cell maturation antigen (BCMA), is a 27 kD, single pass transmembrane protein with one TNFR-Cys repeat on its extracellular domain. CD269 is a B cell maturation factor, essential for the long-term survival of plasma cells. It is expressed by plasmablasts, plasma cells, and germinal center B cells. The ligands of CD269 are BAFF and APRIL, and its cytoplasmic domain binds several of the TRAF family members.

**Antigen References:**

1. Coquery CM and Erickson LD. 2012. *Crit. Rev. Immunol.* 32:287.
2. Notas G, *et al.* 2012. *J. Immunol.* 189:4748.
3. Rickert RC, *et al.* 2011. *Immunol. Rev.* 244:115.
4. Mesin L, *et al.* 2011. *J. Immunol.* 187:2867.