

PE/Dazzle™ 594 anti-human CD269 (BCMA)

Catalog # / Size: 2387560 / 100 tests
2387555 / 25 tests

Clone: 19F2

Isotype: Mouse IgG2a, κ

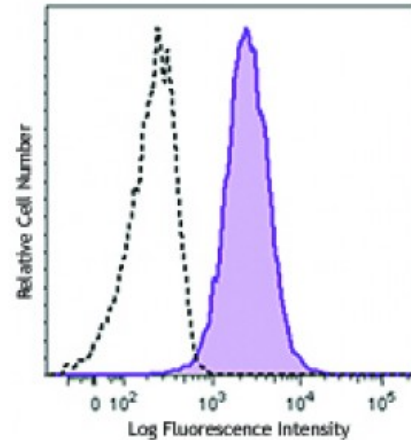
Immunogen: BCMA-mouse IgG Fc fusion protein

Reactivity: Human

Preparation: The antibody was purified by affinity chromatography and conjugated with PE/Dazzle™ 594 under optimal conditions. The solution is free of unconjugated PE/Dazzle™ 594 and unconjugated antibody.

Formulation: Phosphate-buffered solution, pH 7.2, containing 0.09% sodium azide and 0.2% (w/v) BSA (origin USA).

Concentration: Lot-specific



Human myeloma cell line U266 was stained with CD269 (clone 19F2) PE/Dazzle™ 594 (filled histogram) or mouse IgG2a, κ PE/Dazzle™ 594 isotype control (open histogram).

Applications:

Applications: Flow Cytometry

Recommended Usage: Each lot of this antibody is quality control tested by immunofluorescent staining with flow cytometric analysis. For flow cytometric staining, the suggested use of this reagent is 5 microL per million cells or 5 microL per 100 microL of whole blood. It is recommended that the reagent be titrated for optimal performance for each application.

* PE/Dazzle™ 594 has a maximum excitation of 566 nm and a maximum emission of 610 nm.

Description: CD269, also known as B cell maturation antigen (BCMA), is a 27 kD, single pass transmembrane protein with one TNFR-Cys repeat on its extracellular domain. CD269 is a B cell maturation factor, essential for the long-term survival of plasma cells. It is expressed by plasmablasts, plasma cells, and germinal center B cells. The ligands of CD269 are BAFF and APRIL, and its cytoplasmic domain binds several of the TRAF family members.

Antigen References:

1. Coquery CM and Erickson LD. 2012. *Crit. Rev. Immunol.* 32:287.
2. Notas G, *et al.* 2012. *J. Immunol.* 189:4748.
3. Rickert RC, *et al.* 2011. *Immunol. Rev.* 244:115.
4. Mesin L, *et al.*