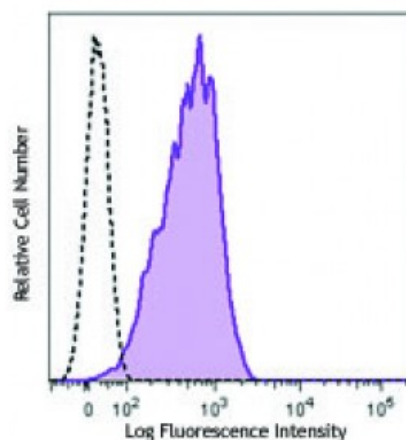


APC anti-human CD269 (BCMA)

Catalog # / Size:	2387530 / 100 tests 2387525 / 25 tests
Clone:	19F2
Isotype:	Mouse IgG2a, κ
Immunogen:	BCMA-mouse IgG Fc fusion protein
Reactivity:	Human
Preparation:	The antibody was purified by affinity chromatography and conjugated with APC under optimal conditions. The solution is free of unconjugated APC and unconjugated antibody.
Formulation:	Phosphate-buffered solution, pH 7.2, containing 0.09% sodium azide and 0.2% (w/v) BSA (origin USA).
Concentration:	Lot-specific



Human myeloma cell line U266 was stained with CD269 (clone 19F2) APC (filled histogram) or mouse IgG2a, κ APC isotype control (open histogram).

Applications:

Applications:	Flow Cytometry
Recommended Usage:	Each lot of this antibody is quality control tested by immunofluorescent staining with flow cytometric analysis. For flow cytometric staining, the suggested use of this reagent is 5 microL per million cells or 5 microL per 100 microL of whole blood. It is recommended that the reagent be titrated for optimal performance for each application.

Description: CD269, also known as B cell maturation antigen (BCMA), is a 27 kD, single pass transmembrane protein with one TNFR-Cys repeat on its extracellular domain. CD269 is a B cell maturation factor, essential for the long-term survival of plasma cells. It is expressed by plasmablasts, plasma cells, and germinal center B cells. The ligands of CD269 are BAFF and APRIL, and its cytoplasmic domain binds several of the TRAF family members.

- Antigen References:**
1. Coquery CM and Erickson LD. 2012. *Crit. Rev. Immunol.* 32:287.
 2. Notas G, *et al.* 2012. *J. Immunol.* 189:4748.
 3. Rickert RC, *et al.* 2011. *Immunol. Rev.* 244:115.
 4. Mesin L, *et al.*