

PE/Cy7 anti-human CD4

Catalog # / Size: 2387050 / 100 tests
2387045 / 25 tests

Clone: A161A1

Isotype: Rat IgG2b, κ

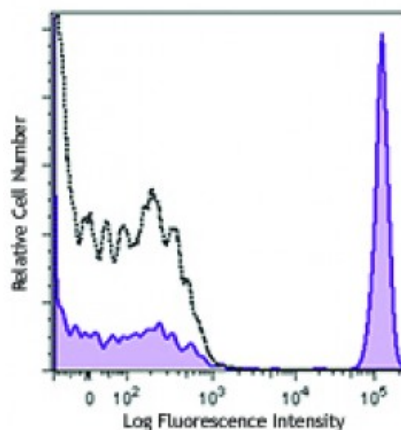
Immunogen: Human CD4 T cells

Reactivity: Human

Preparation: The antibody was purified by affinity chromatography and conjugated with PE/Cy7 under optimal conditions. The solution is free of unconjugated PE/Cy7 and unconjugated antibody.

Formulation: Phosphate-buffered solution, pH 7.2, containing 0.09% sodium azide and 0.2% (w/v) BSA (origin USA).

Concentration: Lot-specific



Human peripheral blood lymphocytes were stained with CD4 (clone A161A1) PE/Cy7 (filled histogram) or rat IgG2b, κ PE/Cy7 isotype control (open histogram).

Applications:

Applications: Flow Cytometry

Recommended Usage: Each lot of this antibody is quality control tested by immunofluorescent staining with flow cytometric analysis. For flow cytometric staining, the suggested use of this reagent is 5 μ L per million cells or 5 μ L per 100 μ L of whole blood. It is recommended that the reagent be titrated for optimal performance for each application.

Description: CD4, also known as T4/Leu-3, is a 55 kD single-chain type I transmembrane glycoprotein and member of the immunoglobulin superfamily. It is expressed on most thymocytes, helper T cells, type II NKT cells, and monocytes/macrophages. CD4 is part of the TCR/CD3 complex, binds to β 2 domain from the MHC class II molecule, and participates in TCR signal transduction. CD4 is the receptor of IL-16 and is a coreceptor for the human immunodeficiency virus (HIV) and human herpes virus 7 (HHV-7).

Antigen References:

1. Zhu J, *et al.* 2010. *Annu Rev. Immunol.* 28:445.
2. Vignali DA. 2010. *J. Immunol.* 184:5933.
3. Zhou L, *et al.* 2009. *Immunity* 30:646.
4. Singer A, *et al.* 2008. *Nat. Rev. Immunol.* <