

**FITC anti-human CD4**

**Catalog # / Size:** 2387030 / 100 tests  
2387025 / 25 tests

**Clone:** A161A1

**Isotype:** Rat IgG2b,  $\kappa$

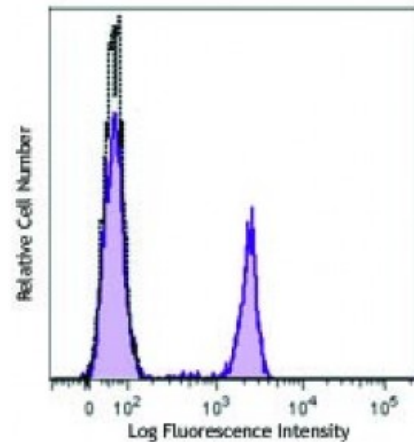
**Immunogen:** Human CD4 T cells

**Reactivity:** Human

**Preparation:** The antibody was purified by affinity chromatography and conjugated with FITC under optimal conditions. The solution is free of unconjugated FITC and unconjugated antibody.

**Formulation:** Phosphate-buffered solution, pH 7.2, containing 0.09% sodium azide and 0.2% (w/v) BSA (origin USA).

**Concentration:** Lot-specific



Human peripheral blood lymphocytes were stained with CD4 (clone A161A1) FITC (filled histogram) or rat IgG2b,  $\kappa$  FITC isotype control (open histogram).

**Applications:**

**Applications:** Flow Cytometry

**Recommended Usage:** Each lot of this antibody is quality control tested by immunofluorescent staining with flow cytometric analysis. For flow cytometric staining, the suggested use of this reagent is 5 microL per million cells or 5 microL per 100 microL of whole blood. It is recommended that the reagent be titrated for optimal performance for each application.

**Description:** CD4, also known as T4/Leu-3, is a 55 kD single-chain type I transmembrane glycoprotein and member of the immunoglobulin superfamily. It is expressed on most thymocytes, helper T cells, type II NKT cells, and monocytes/macrophages. CD4 is part of the TCR/CD3 complex, binds to  $\beta 2$  domain from the MHC class II molecule, and participates in TCR signal transduction. CD4 is the receptor of IL-16 and is a coreceptor for the human immunodeficiency virus (HIV) and human herpes virus 7 (HHV-7).

**Antigen References:**

1. Zhu J, *et al.* 2010. *Annu Rev. Immunol.* 28:445.
2. Vignali DA. 2010. *J. Immunol.* 184:5933.
3. Zhou L, *et al.* 2009. *Immunity* 30:646.
4. Singer A, *et al.* 2008. *Nat. Rev. Immunol.* <