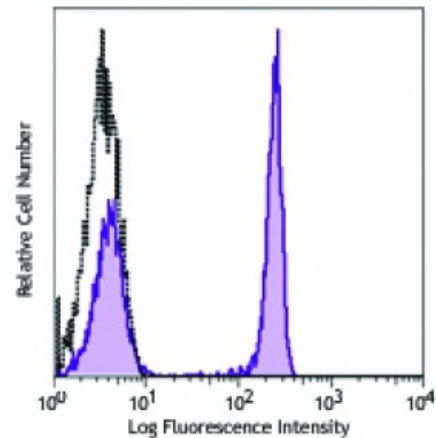


**Purified anti-human CD4**

**Catalog # / Size:** 2387010 / 100 µg  
**Clone:** A161A1  
**Isotype:** Rat IgG2b, κ  
**Immunogen:** Human CD4 T cells  
**Reactivity:** Human  
**Preparation:** The antibody was purified by affinity chromatography.  
**Formulation:** Phosphate-buffered solution, pH 7.2, containing 0.09% sodium azide.  
**Concentration:** 0.5



Human peripheral blood lymphocytes were stained with purified CD4 (clone A161A1, filled histogram) or purified rat IgG2b, κ isotype control (open histogram), followed by anti-rat IgG FITC.

**Applications:**

**Applications:** Flow Cytometry  
**Recommended Usage:** Each lot of this antibody is quality control tested by immunofluorescent staining with flow cytometric analysis. For flow cytometric staining, the suggested use of this reagent is ≤0.25 microg per million cells in 100 microL volume. It is recommended that the reagent be titrated for optimal performance for each application.

**Description:** CD4, also known as T4/Leu-3, is a 55 kD single-chain type I transmembrane glycoprotein and member of the immunoglobulin superfamily. It is expressed on most thymocytes, helper T cells, type II NKT cells, and monocytes/macrophages. CD4 is part of the TCR/CD3 complex, binds to β2 domain from the MHC class II molecule, and participates in TCR signal transduction. CD4 is the receptor of IL-16 and is a coreceptor for the human immunodeficiency virus (HIV) and human herpes virus 7 (HHV-7).

**Antigen References:**  
1. Zhu J, *et al.* 2010. *Annu Rev. Immunol.* 28:445.  
2. Vignali DA. 2010. *J. Immunol.* 184:5933.  
3. Zhou L, *et al.* 2009. *Immunity* 30:646.  
4. Singer A, *et al.* 2008. *Nat. Rev. Immunol.* <