

**PE/Dazzle™ 594 anti-human CD185 (CXCR5)**

**Catalog # / Size:** 2384640 / 100 tests  
2384635 / 25 tests

**Clone:** J252D4

**Isotype:** Mouse IgG1, κ

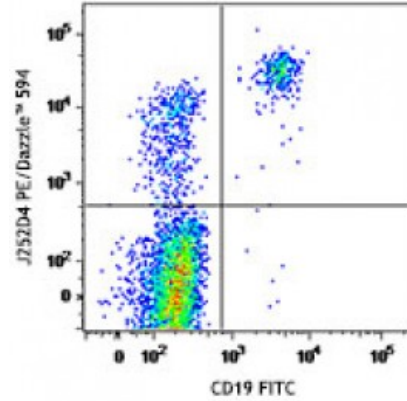
**Immunogen:** Human CXCR5-transfected cells

**Reactivity:** Human

**Preparation:** The antibody was purified by affinity chromatography and conjugated with PE/Dazzle™ 594 under optimal conditions. The solution is free of unconjugated PE/Dazzle™ 594 and unconjugated antibody.

**Formulation:** Phosphate-buffered solution, pH 7.2, containing 0.09% sodium azide and 0.2% (w/v) BSA (origin USA).

**Concentration:** Lot-specific

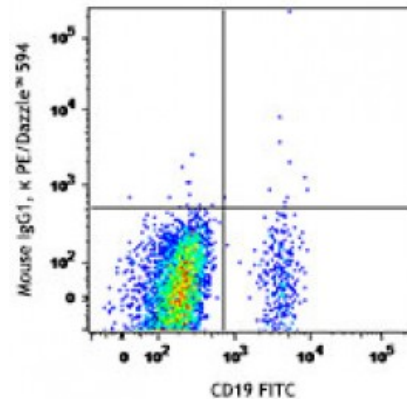


Human peripheral blood lymphocytes were stained with CD19 FITC and CD185 (CXCR5, clone J252D4) PE/Dazzle™ 594 (top) or mouse IgG1, κ PE/Dazzle™ 594 isotype control (bottom).

**Applications:**

**Applications:** Flow Cytometry

**Recommended Usage:** Each lot of this antibody is quality control tested by immunofluorescent staining with flow cytometric analysis. For flow cytometric staining, the suggested use of this reagent is 5 microL per million cells or 5 microL per 100 microL of whole blood. It is recommended that the reagent be titrated for optimal performance for each application.



\* PE/Dazzle™ 594 has a maximum excitation of 566 nm and a maximum emission of 610 nm.

**Description:** CD185, also known as CXCR5, is a 42 kD G-protein coupled receptor with seven transmembrane regions. CXCR5 is expressed by mature B cells, follicular helper T cells, Burkitt’s lymphoma cells and a subset of neurons, and mediates cell migration to the B cell follicles in the secondary lymphoid organs. The ligand of CXCR5 is CXCL13 (BLC).

- Antigen References:**
1. Ma CS, *et al.* 2012. *J. Exp. Med.* 209:1241.
  2. León B, *et al.* 2012. *Nat. Immunol.* 13:681.
  3. Crotty S. 2011. *Annu. Rev. Immunol.* 29:621.
  4. Kerfoot SM, *et al.* 2011. *Im*