

Pacific Blue™ anti-human CD185 (CXCR5)

Catalog # / Size: 2384585 / 25 tests
2384590 / 100 tests

Clone: J252D4

Isotype: Mouse IgG1, κ

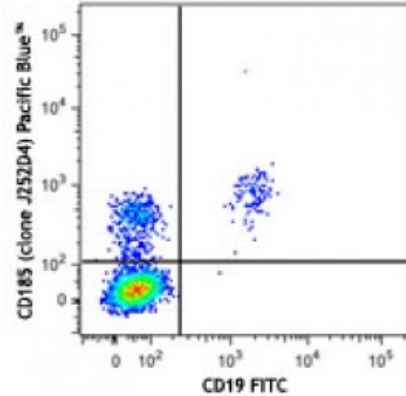
Immunogen: Human CXCR5-transfected cells

Reactivity: Human

Preparation: The antibody was purified by affinity chromatography and conjugated with Pacific Blue™ under optimal conditions. The solution is free of unconjugated Pacific Blue™.

Formulation: Phosphate-buffered solution, pH 7.2, containing 0.09% sodium azide and 0.2% (w/v) BSA (origin USA).

Concentration: Lot-specific

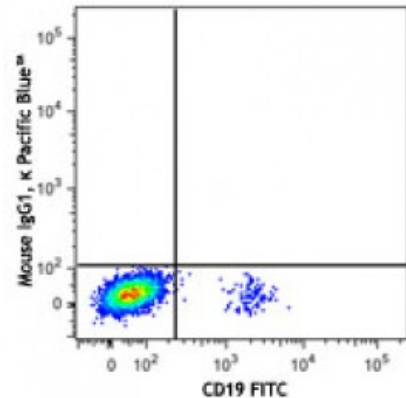


Human peripheral blood lymphocytes were stained with CD19 FITC and CD185 (clone J252D4) Pacific Blue™ (top) or mouse IgG1, κ Pacific Blue™ isotype control (bottom).

Applications:

Applications: Flow Cytometry

Recommended Usage: Each lot of this antibody is quality control tested by immunofluorescent staining with flow cytometric analysis. For flow cytometric staining, the suggested use of this reagent is 5 microL per million cells or 5 microL per 100 microL of whole blood. It is recommended that the reagent be titrated for optimal performance for each application.



* Pacific Blue™ has a maximum emission of 455 nm when it is excited at 405 nm. Prior to using Pacific Blue™ conjugate for flow cytometric analysis, please verify your flow cytometer's capability of exciting and detecting the fluorochrome.

Description: CD185, also known as CXCR5, is a 42 kD G-protein coupled receptor with seven transmembrane regions. CXCR5 is expressed by mature B cells, follicular helper T cells, Burkitt's lymphoma cells and a subset of neurons, and mediates cell migration to the B cell follicles in the secondary lymphoid organs. The ligand of CXCR5 is CXCL13 (BLC).

Antigen References:

1. Ma CS, *et al.* 2012. *J. Exp. Med.* 209:1241.
2. León B, *et al.* 2012. *Nat. Immunol.* 13:681.
3. Crotty S. 2011. *Annu. Rev. Immunol.* 29:621.
4. Kerfoot SM, *et al.* 2011. *Im*