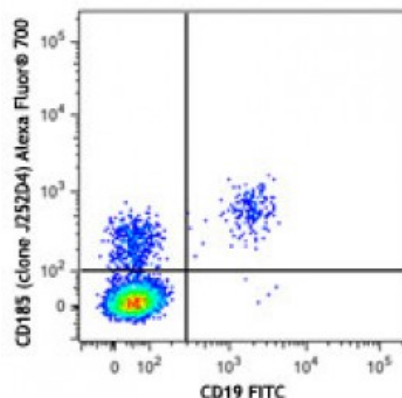


Alexa Fluor® 700 anti-human CD185 (CXCR5)

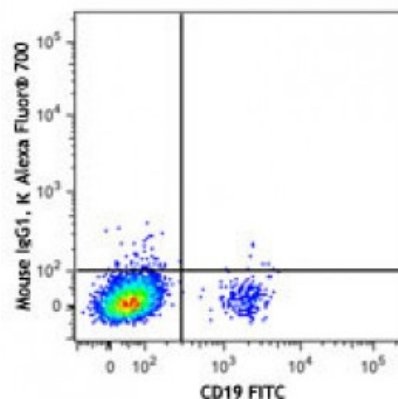
Catalog # / Size:	2384575 / 25 tests 2384580 / 100 tests
Clone:	J252D4
Isotype:	Mouse IgG1, κ
Immunogen:	Human CXCR5-transfected cells
Reactivity:	Human
Preparation:	The antibody was purified by affinity chromatography and conjugated with Alexa Fluor® 700 under optimal conditions.
Formulation:	Phosphate-buffered solution, pH 7.2, containing 0.09% sodium azide and 0.2% (w/v) BSA (origin USA).
Concentration:	Lot-specific



Human peripheral blood lymphocytes were stained with CD19 FITC and CD185 (clone J252D4) Alexa Fluor® 700 (top) or mouse IgG1, κ Alexa Fluor® 700 isotype control (bottom).

Applications:

Applications:	Flow Cytometry
Recommended Usage:	Each lot of this antibody is quality control tested by immunofluorescent staining with flow cytometric analysis. For flow cytometric staining, the suggested use of this reagent is 5 microL per million cells or 5 microL per 100 microL of whole blood. It is recommended that the reagent be titrated for optimal performance for each application.



* Alexa Fluor® 700 has a maximum emission of 719 nm when it is excited at 633 nm / 635 nm. Prior to using Alexa Fluor® 700 conjugate for flow cytometric analysis, please verify your flow cytometer's capability of exciting and detecting the fluorochrome.

Description: CD185, also known as CXCR5, is a 42 kD G-protein coupled receptor with seven transmembrane regions. CXCR5 is expressed by mature B cells, follicular helper T cells, Burkitt's lymphoma cells and a subset of neurons, and mediates cell migration to the B cell follicles in the secondary lymphoid organs. The ligand of CXCR5 is CXCL13 (BLC).

Antigen	1. Ma CS, <i>et al.</i> 2012. <i>J. Exp. Med.</i> 209:1241.
References:	2. León B, <i>et al.</i> 2012. <i>Nat. Immunol.</i> 13:681.
	3. Crotty S. 2011. <i>Annu. Rev. Immunol.</i> 29:621.
	4. Kerfoot SM, <i>et al.</i> 2011. <i>Im</i>